

RAMOTSWA project

The Potential Role of the Transboundary Ramotswa Aquifer

Ramotswa Information Management System – RIMS

Powered by IGRAC

Progress and future planning

Bochengedu Somolekae

*2nd Regional Meeting on Tools for the Sustainable
Management of Transboundary Aquifers
Johannesburg, South Africa
1st December 2016*



Web- based Geographical Information Systems

IGRAC GGIS:

- Web portals
- Map based
- Open standards
- Flexible
- Public & password protected viewers
- Data in one place



Transboundary groundwater



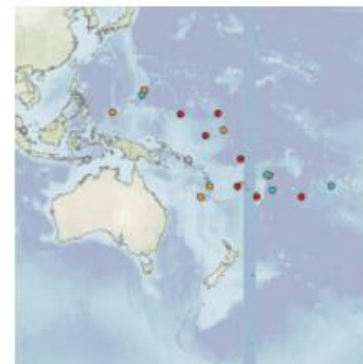
Global Country Data



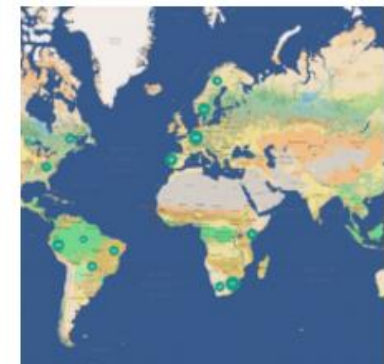
Project Related Information



Managed Aquifer Recharge



Small Islands



Groundwater monitoring

After; Geert-Jan Nijsten

Impressions from the RIMS viewer

<https://ramotswa.un-igrac.org>

RAMOTSWA-project **igrac**

USAID | SOUTHERN AFRICA IWRM
RESILIM Resilience in the Limpopo River Basin Program

Public viewer

Catalog

- Administrative
 - International border
 - ram_administrative_boundary
 - ram_settlements
 - ram_administrative_gwmanagement_area
 - ram_administrative_gwmanagement_unit
- Demographic
 - ram_demographic_RSA_population
 - ram_demographic_RSA_population2
 - ram_demographic_BW_population2
 - ram_demographic_RSA_gender

Active layers

- MapBox

RAMOTSWA-project **igrac**

USAID | SOUTHERN AFRICA IWRM
RESILIM Resilience in the Limpopo River Basin Program

VIEWER UNDER DEVELOPMENT

About this viewer

This map viewer contains the results from the RAMOTSWA project (<http://ramotswa.iwmi.org>). The viewer contains thematic maps on groundwater and groundwater related themes. The viewer is designed to provide information to a wide group of stakeholders, like groundwater users and those engaged in the management of the groundwater resources in the Ramotswa Transboundary Aquifer. This 'public' viewer contains all data which has been made publicly available. There is also a 'password protected' viewer containing additional information. Access to the password protected viewer is restricted (for more information contact IGRAC at info@un-igrac.org, specifying that you would like access to the Ramotswa viewer).

About the RAMOTSWA project

This project is a component of the Resilience in the Limpopo Basin Program (RESILIM). RESILIM supports the riparian countries of the Limpopo Basin (Botswana, Mozambique, South Africa, Zimbabwe) in their efforts to improve shared management of water resources and ecosystems and equitably address the economic, environmental, and social needs of each country, thereby enhancing the resilience of the ecosystems and the people. The RESILIM Program, funded by USAID, supports equitable access to water that balances urban and rural needs with ecosystem requirements under a changing climate. It reduces climate vulnerability by promoting adaptation strategies for integrated, transboundary water and ecosystem resources management. By building the capacity of river basin organizations, national authorities and local communities to sustainably manage natural resources, high priority ecosystems and human communities will be resilient to climate-induced pressure.

The project 'Resilience in the Limpopo Basin: the Potential Role of the Transboundary Ramotswa Aquifer' (RAMOTSWA) addresses the programme objectives by critically examining the role and options that the freshwater aquifer can offer its

20 km
24.68964, -26.42257

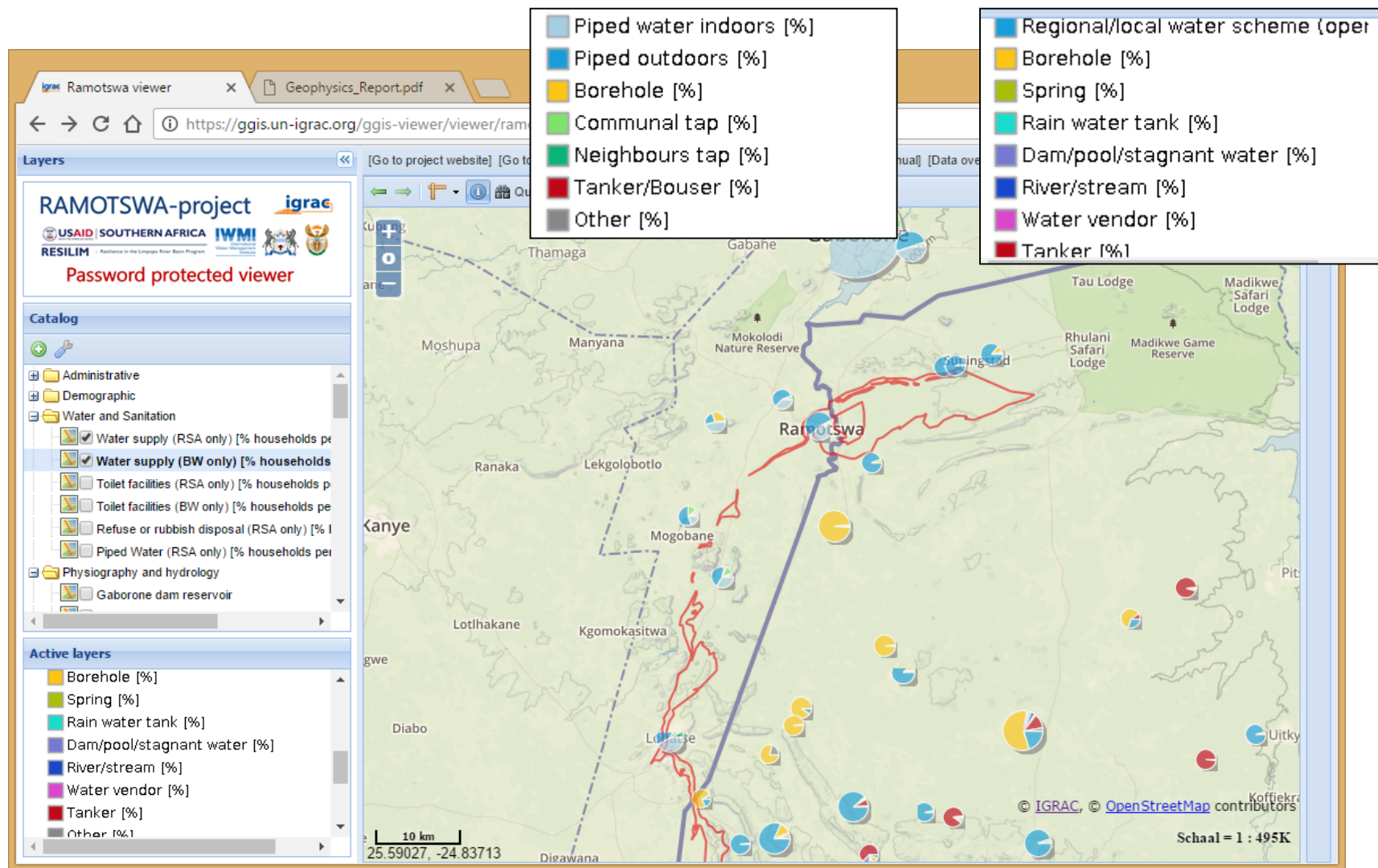
© IGRAC © OpenStreetMap contributors
Schaal = 1 : 2M

All maps from Ramotswa project available

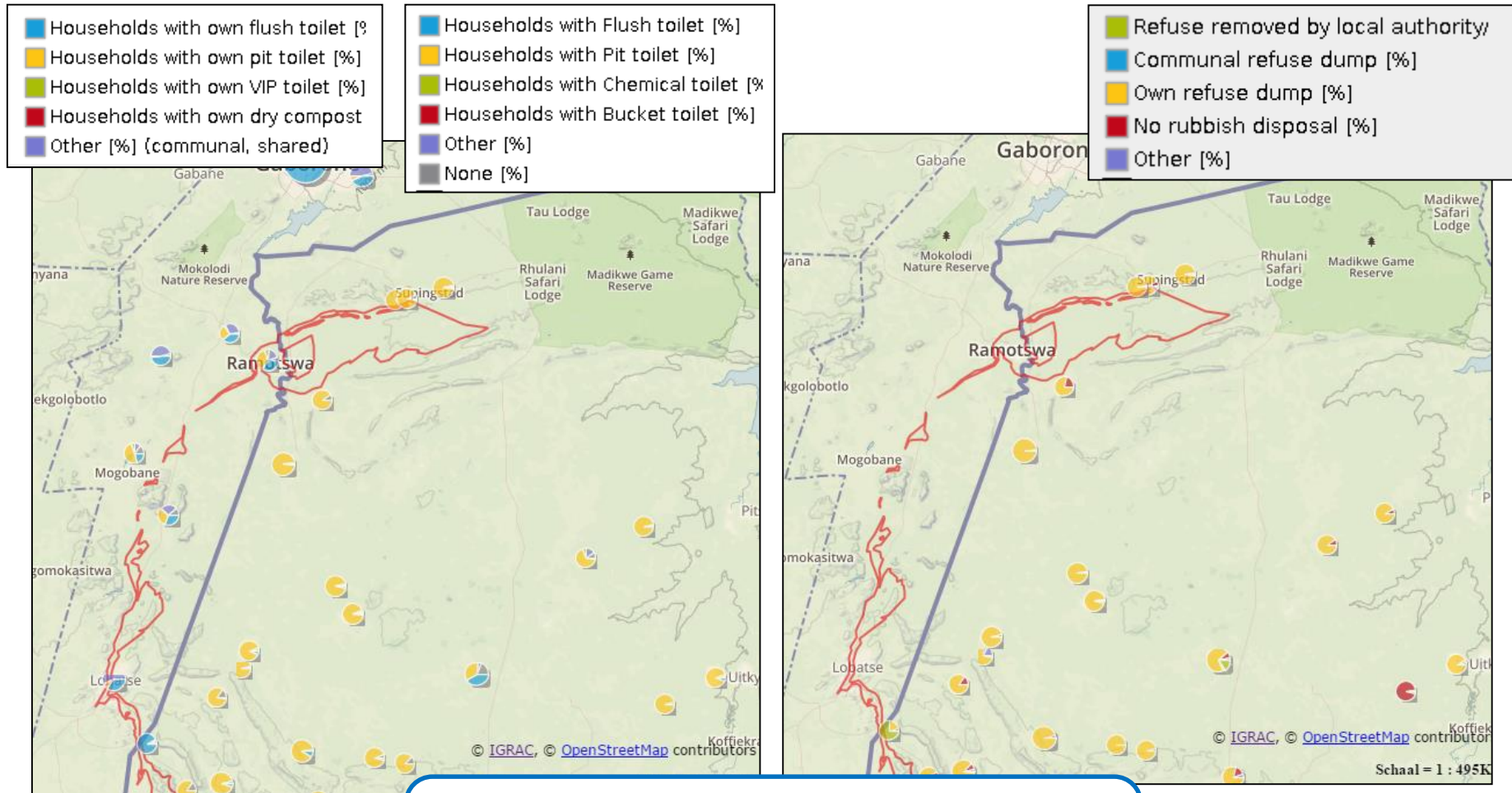
The screenshot displays the 'Ramotswa viewer' web application. The browser address bar shows the URL: <https://ggis.un-igrac.org/ggis-viewer/viewer/ramotswa/private/default>. The interface includes a 'Layers' panel on the left with the 'RAMOTSWA-project' logo and a 'Catalog' panel on the right. The 'Catalog' panel lists various thematic maps, including Administrative, Demographic, Water and Sanitation, Physiography and hydrology, Hydrogeology, Borehole information, Ramotswa Geophysical survey, Geology, Ramotswa Training outcomes - February 2016, Historic Ramotswa delineations 2009 -2015, SADC Hydrogeological Map, and Overige kaartlagen. The map area shows the Ramotswa Aquifer boundary (default layer) and the Khutse Game Reserve. A blue callout box at the bottom left contains the text: 'More than 80 thematic maps Under different themes'.

**More than 80 thematic maps
Under different themes**

Water supply (households)



Toilet facilities – Waste disposal



Pollution risks...

Sustainable development goals

Thank you for your attention

PULA PULA !!

