

	J-1	J-2	J-3	J-4	J-5	J-6	J-7	J-8	J-9
Kalahari	WL	-	WL 19.08 m	WL 49.40 mBGL	WL	WL 102.14 mBGL	WL 9.72 mBGL	WL 59.75 mBGL	WL
	WL	-	WL 1188.97 mAS	WL 1208.66 mAS	WL	WL 1000.53 mAS	WL 1138.47 mAS	WL 961.5 mASL	WL
	T	-	T 6.4 m ² /day	T 0.1 m ² /day	T	T 6.2 m ² /day	T 30.0 m ² /day	T 0.13 m ² /day	T
	EC	-	EC 330 mS/m	EC 227 mS/m	EC	EC 2.310 mS/m	EC 103 mS/m	EC 351 mS/m	EC
	TDS	-	TDS 2157 mg/L	TDS 1481 mg/L	TDS	TDS 14874 mg/L	TDS 670 mg/L	TDS 2282 mg/L	TDS
Auob	WL	WL 57.72 mBGL	WL 13.62 mBGL	WL 59.15 mBGL	WL	WL 102.8 mBGL	WL	WL 183.8 mBGL	WL
	WL	WL 1274.00 mAS	WL 1194.44 mAS	WL 1197.25 mAS	WL	WL 999.66 mASL	WL	WL 831.18 mASL	WL
	T	T 25.2 m ² /day	T 3.4 m ² /day	T 194.0 m ² /day	T	T 8.4 m ² /day	T	T 0.3 m ² /day	T
	EC	EC 85 mS/m	EC 90 mS/m	EC 116 mS/m	EC	EC 187 mS/m	EC	EC 1.039 mS/m	EC
	TDS	TDS 564 mg/L	TDS 605 mg/L	TDS 775 mg/L	TDS	TDS 1248 mg/L	TDS	TDS 6754 mg/L	TDS
Nosob	WL	WL 39.45 mBGL	WL -30.91 mBGL	WL 6.23 mBGL	WL	WL -29.57 mBGL	WL	WL 21.65 mBGL	WL
	WL	WL 1236.15 mAS	WL 1238.96 mAS	WL 1250.15 mAS	WL	WL 1197.90 mAS	WL	WL 1126.50 mAS	WL
	T	T 2.9 m ² /day	T 1.3 m ² /day	T 7.01 m ² /day	T	T 1.2 m ² /day	T	T 0.02 m ² /day	T
	EC	EC 91 mS/m	EC 460 mS/m	EC 100 mS/m	EC	EC 136 mS/m	EC	EC 431 mS/m	EC
	TDS	TDS 616 mg/L	TDS 3303 mg/L	TDS 3303 mg/L	TDS	TDS 909 mg/L	TDS	TDS 2743 mg/L	TDS

Note: EC, pH, Temp: Field measurement
 mBGL: m below ground level
 mASL: m above sea level
 T: Transmissivity

Fig. 8.3-9 Geological Columnar Sections and Hydrogeological Characteristics

8.3.2 Hydrogeological Map and Cross Sections

The hydrogeological legend was set up as follows based on the International Legend for Hydrogeological Maps (UNESCO 1983).

Legend for Hydrogeological Map

Granular Aquifer	Dark Blue	Extensive and highly productive aquifer	Auob Aquifer
	Blue	Extensive and moderately productive aquifer	Kalahari Aquifer
	Light Blue	Extensive and low productive aquifer	Nossob Aquifer
Fissured Aquifer	Green	Local or discontinuous moderately productive aquifer	Kalkland Basalt
	Yellow Green	Local or discontinuous low to no productive aquifer	Karoo Dolerite
Insignificant Aquifer		Strata with essentially no groundwater resources	Pre-Ecca Group, Lower Rietmond and Lower Mukarob
	Brown		

1) Hydrogeological Map

Hydrogeological map of the study area were made as shown in Fig.8.3-18.

2) Hydrogeological Cross Sections

Hydrogeological cross sections are illustrated as Fig.8.3-10 to Fig.8.3-17 applying the definition of aquifer and the above hydrogeological legend based on geological cross sections. The location map of cross section is shown in Fig.8.3-10.

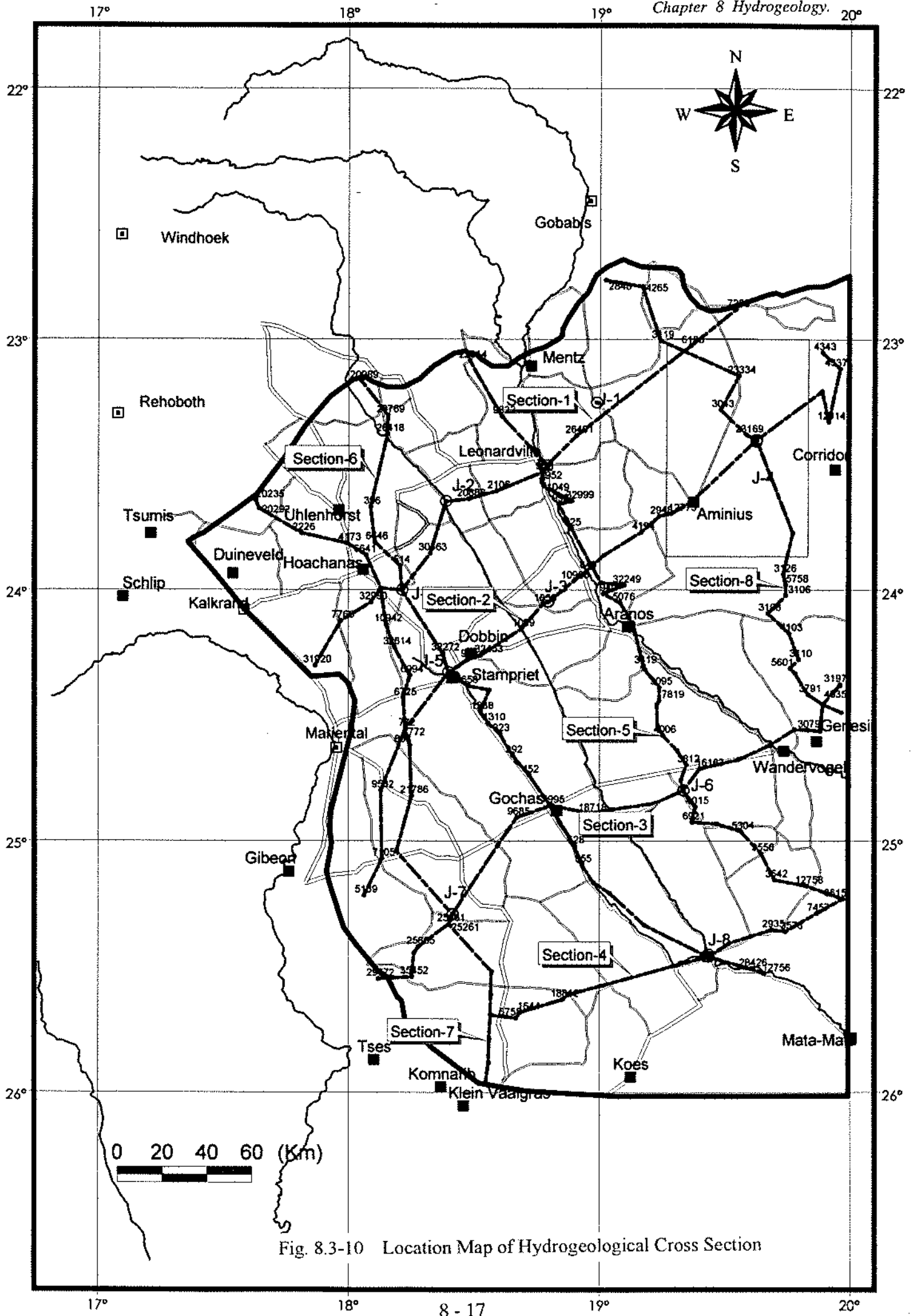


Fig. 8.3-10 Location Map of Hydrogeological Cross Section

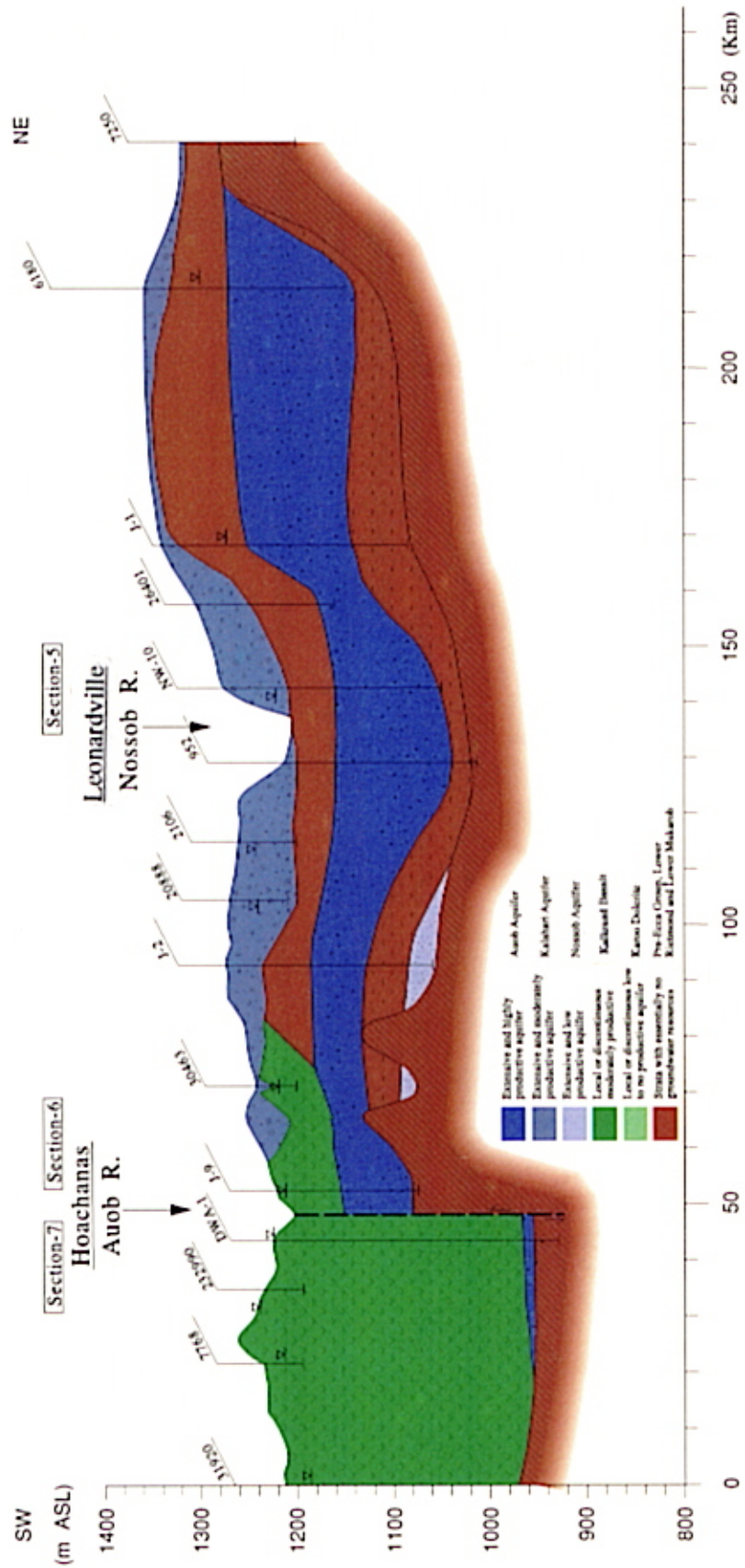


Fig. 8.3-11 Hydrogeological Cross Section -1

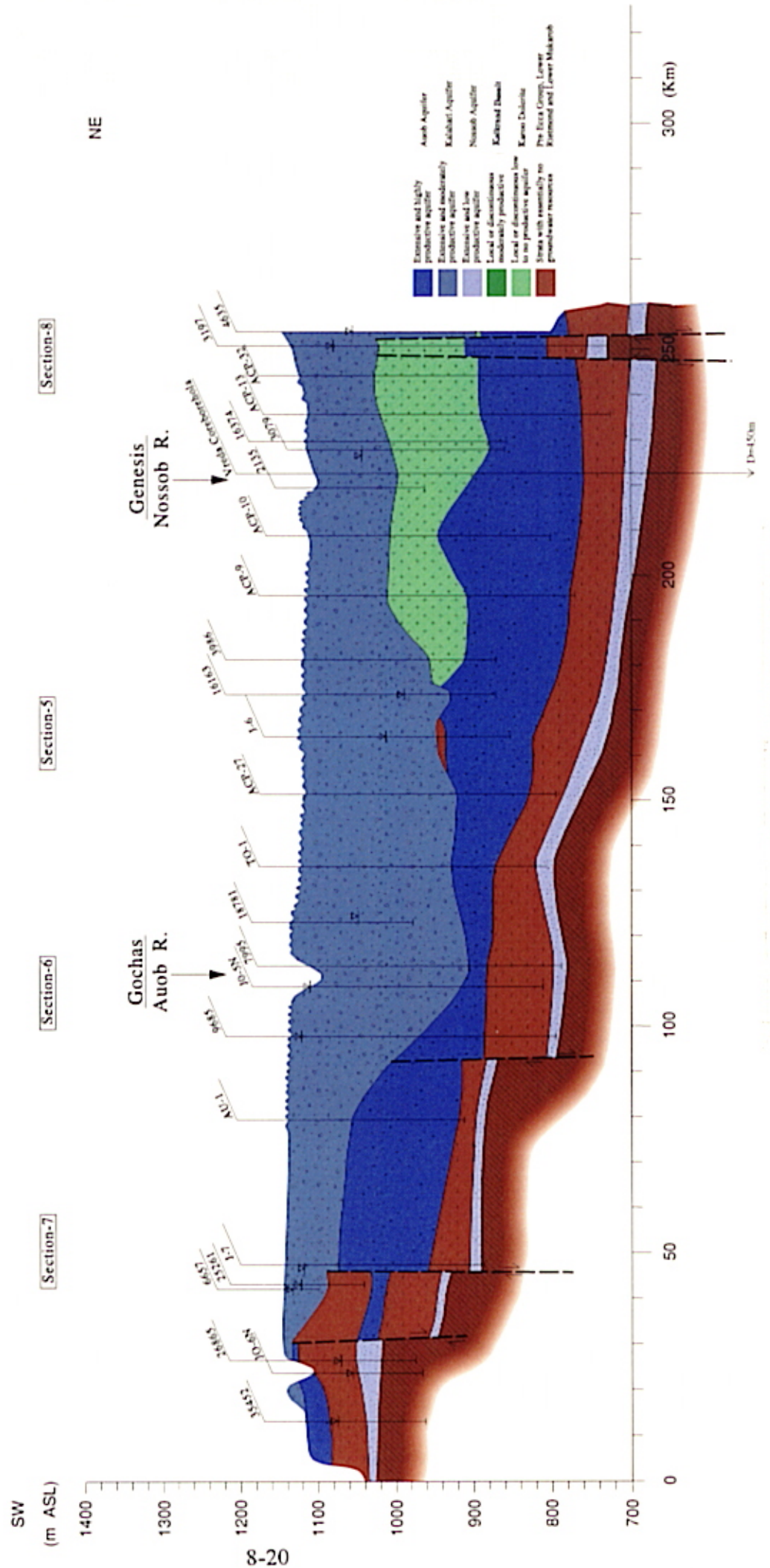


Fig. 8.3-13 Hydrogeological Cross Section-3