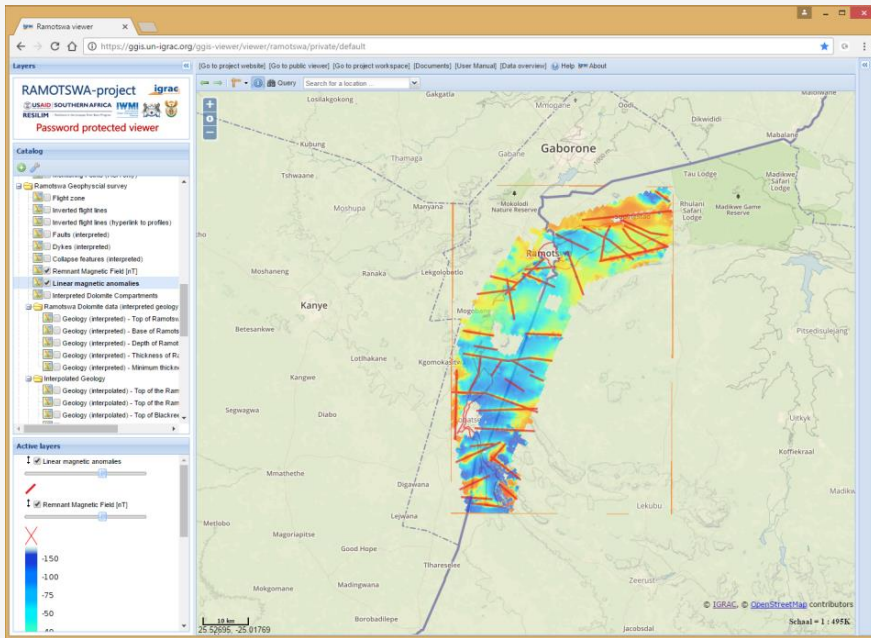




RAMOTSWA project

The Potential Role of the Transboundary Ramotswa Aquifer



*Ramotswa Information
Management System – RIMS
Kwazikwakhe Majola
DWS – Department of Water and
Sanitation, South Africa*

*2nd Regional Meeting on Tools for the Sustainable
Management of Transboundary Aquifers
Johannesburg, South Africa
01 December 2016*



Republic of Botswana



UNIVERSITY
BOTSWANA



University of Pretoria



UNIVERSITY OF THE WITWATERSRAND
JOHANNESBURG

Outline

- Ways to advertise RIMS to external stakeholders (outside of the project)
- Needs to fulfil RIMS Manager role...and beyond project life
- Expectations from Phase 2

Ways to advertise RIMS

- Pamphlets to be distributed in Conferences, Symposia, other platforms,
- (Presentations) to Stakeholder groups, forums, associations,
- **Presentations in various platforms,**
- Article(s) into the Groundwater Division, Water Research Commission, etc websites,
- **Article on DWS Newsletter/website on the project and RIMS,**
- Integration into the National Integrated Water Information System (NIWIS) of the DWS

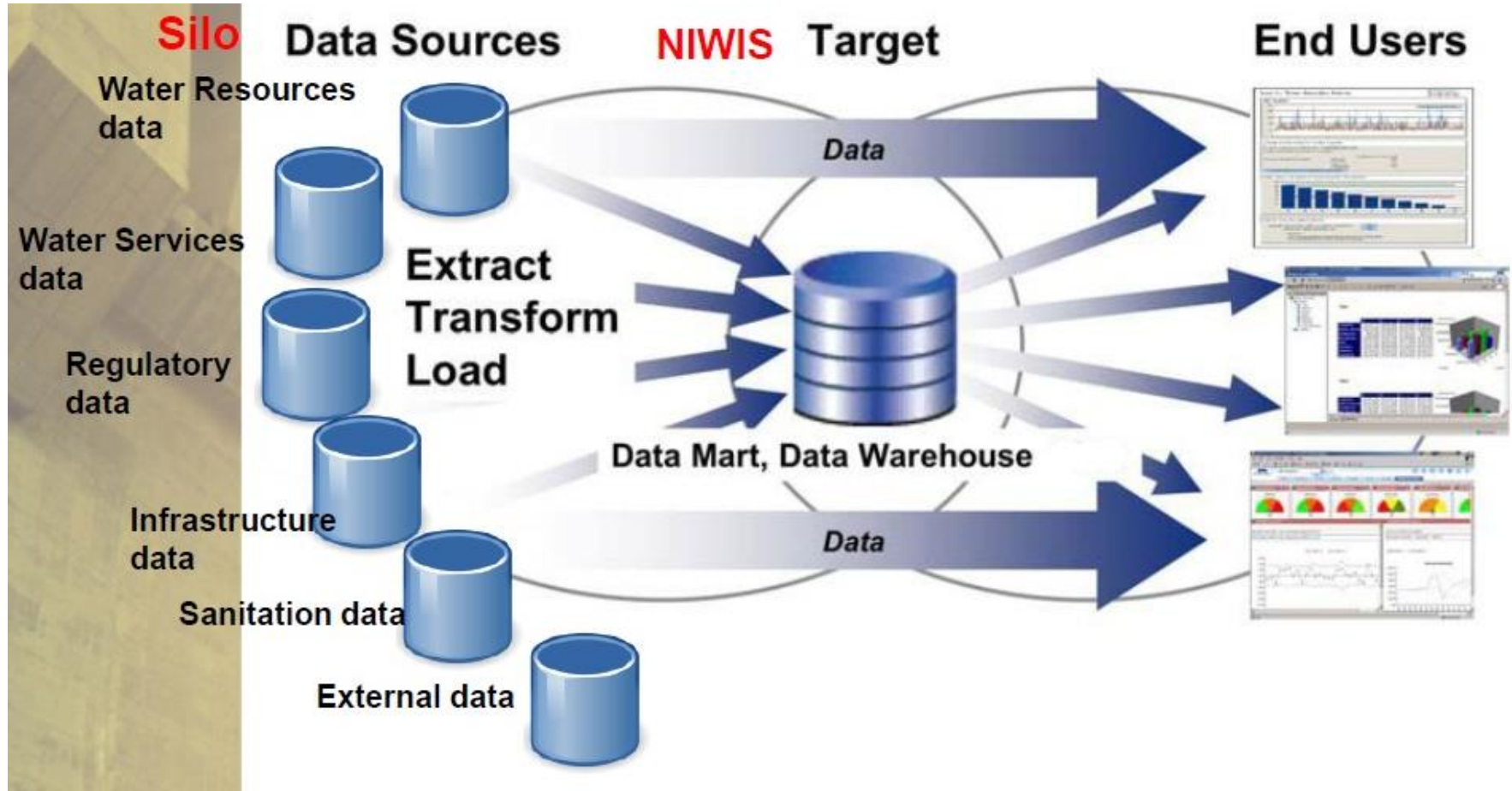
NIWIS Background

- The National Integrated Water Information System (NIWIS) is an integrated system for the DWS and the water sector being implemented as one of the components of NWRS2.
- **NIWIS Objectives**
 - Serve as a single extensive, integrated, accessible water management information system
 - Improved information access
 - Empower users as well as providing user-controlled reporting capabilities

System set-up at DWS



NIWIS Vision – transformation of integrated data into information





WATER IS LIFE, SANITATION IS DIGNITY



Home | Regulatory | Operational | Strategic | **Drought Status** | NIWIS Document Management

Water Quality | Water Use Aut | Enforcement | Municipal Strat

Water Status | Water Use | Government Water | Water Reservoir S | DWS Human Cap

Strategic | Drought St

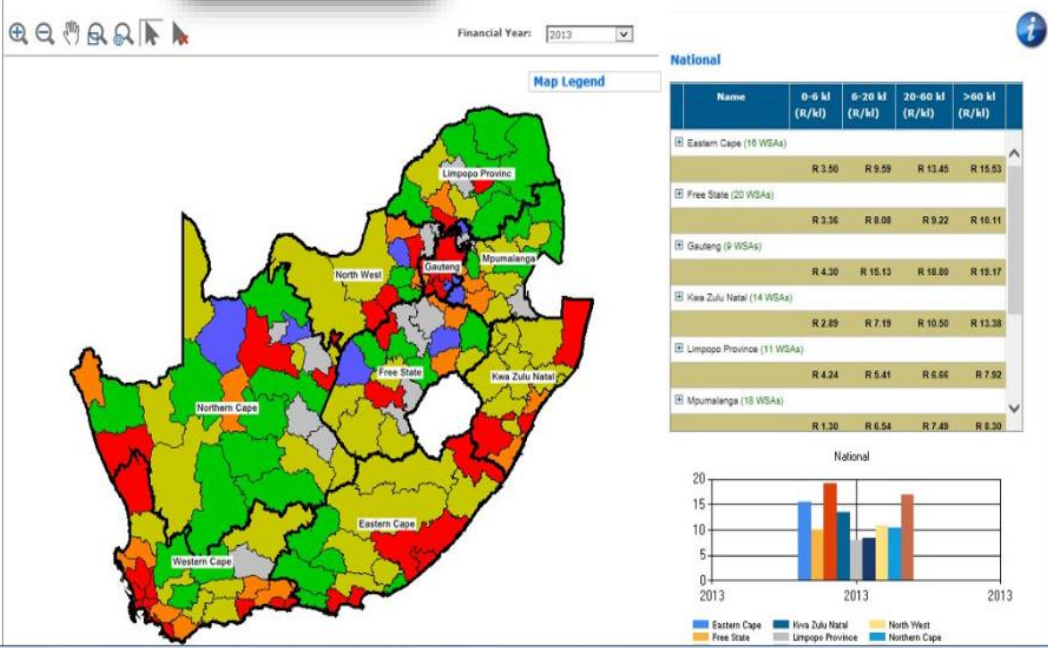
Reserves | Access to Water | Dam Safety | Water Tariffs | Monitoring Networks

Data Availability and Business Processes

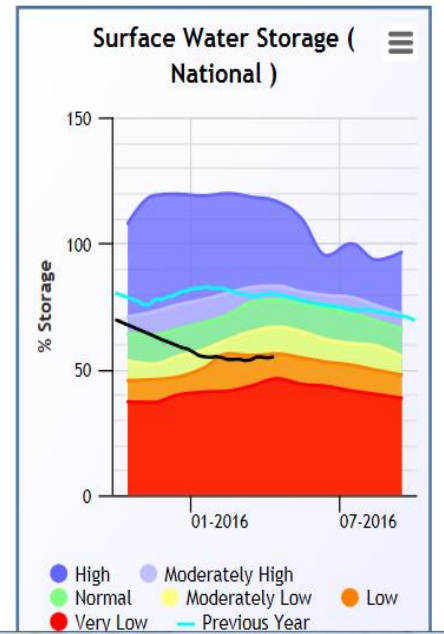
Contacts for Help and Feedback

Hit Counter

- [DWS Home](#)
- [NIWIS Video](#)
- [User Manual](#)
- [Contacts](#)



Surface Water Storage



NIWIS Links

niwis.dws.gov.za

Public

niwisho.dws.gov.za

Head Office

niwisp.dws.gov

Provincial Users

NIWIS_Support@dws.gov.za
and Support

for Feedback

Needs to fulfil RIMS Manager role

- A second in-depth training on the system, with more team members than RIMS Managers
- Full system management capabilities going beyond the life of the project
- Communication channel(s) with users (e-mails)
- If we advertise the system we need to keep updating it (indicate date of update)

Expectations from Phase 2

- Addition of time series data indicating monitoring boreholes, active, inactive, water levels, water quality, etc
- Plan/strategy to regularly update RIMS data e.g. How frequent and how, etc.
 - 1 database before uploading
 - Per country uploading, etc
 - Notifying interested parties.....e.g. Data last updated on.....
- Explore possibilities of integrating data from different TBA systems to create a country system



Thank You!

Remember,

RIMS has gone Public!!!