

TIERPOORT DAM SCHEME

LOCATION

The Tierpoort Dam Scheme is located in quaternary C51G on the Tierpoort River (a tributary of the Riet River), upstream of Kalkfontein Dam, which is situated on the Riet River.

DESCRIPTION

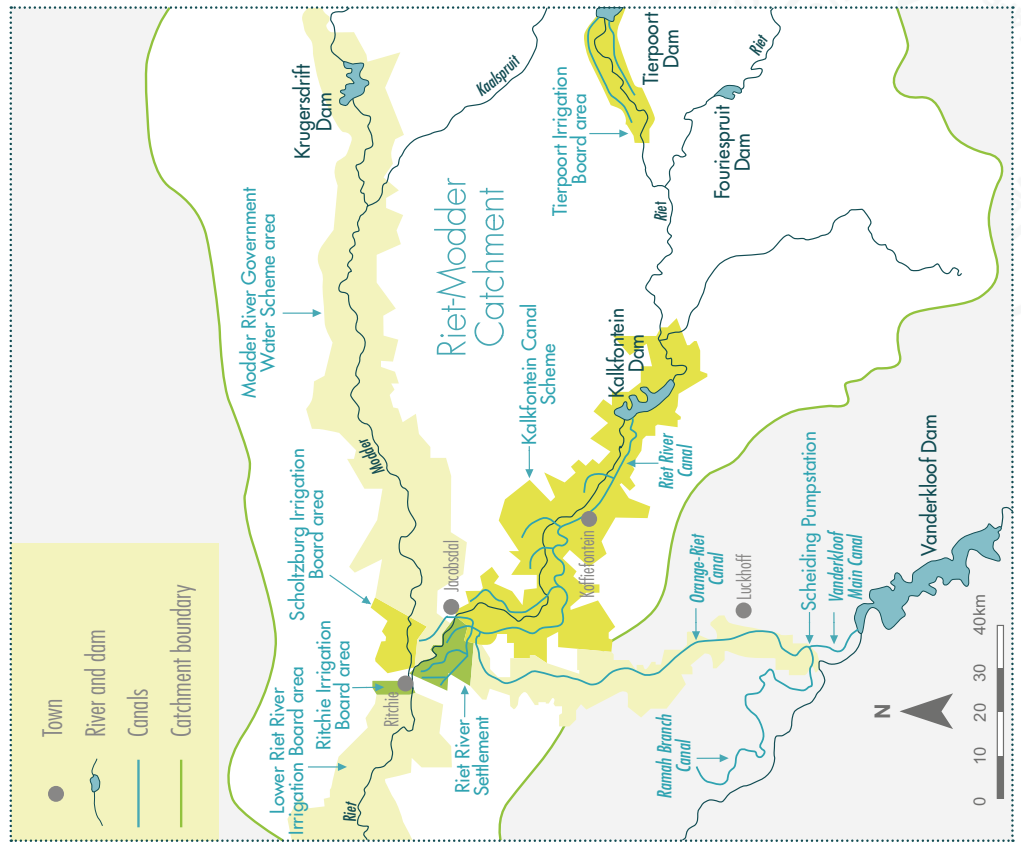
The scheme consists of the Tierpoort Dam, and two canals which run alongside the river.

PHYSICAL INFORMATION

Tierpoort Dam was commissioned in 1923 but was reconstructed in 1990 after the 1988 floods washed the dam away. It has a full supply capacity of 34.5 million m³, with a wall height of 20 m and length of 180 m, with a maximum spillway capacity of 4 700 m³/s. Refer to the schematic in the Introduction.

PURPOSE

The scheme is owned by, and supplies, the Tierpoort Irrigation Board via the two canals.



Locality map (from map produced for ORASECOM Infrastructure Report, 2007)