

# RIET RIVER GOVERNMENT WATER SCHEME

## LOCATION

The Riet River Government Water Scheme is located downstream of Kalkfontein Dam (quaternary C5.1J) on the Riet River.

## DESCRIPTION

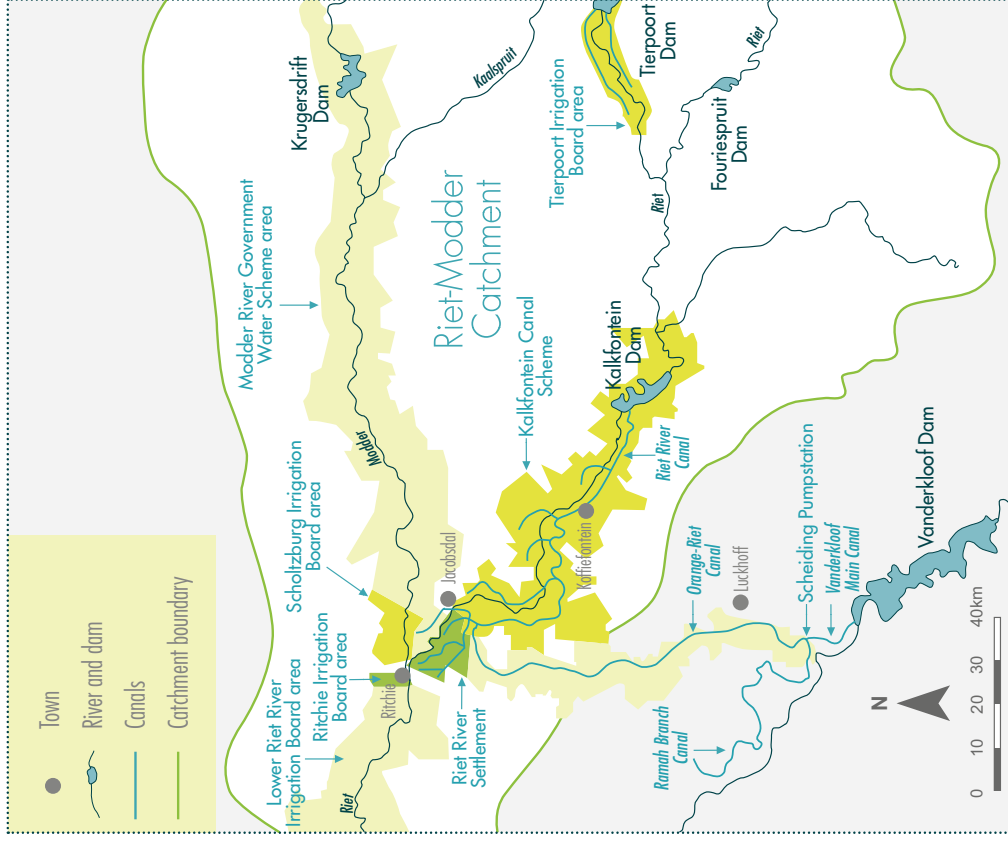
The scheme consists of Kalkfontein Dam, and two canals running alongside the Riet River.

## PHYSICAL INFORMATION

Kalkfontein Dam has a full supply capacity of 258 million m<sup>3</sup>, with a wall height of 36 m and length of 317 m, with a maximum spillway capacity of 1 700 m<sup>3</sup>/s. Refer to the schematic in the Introduction.

## PURPOSE

The scheme supplies an urban demand to the town of Jacobsdal and the mining demands of Koffiefontein. It initially supplied the additional demands of the Riet River Settlement, the Scholtzburg Irrigation Board Area, the Ritchie Irrigation Board and the town of Ritchie, but these are now supplied by the Sarel Hayward Canal (part of the Orange-Riet Scheme).



Locality map (from map produced for ORASECOM Infrastructure Report, 2007)