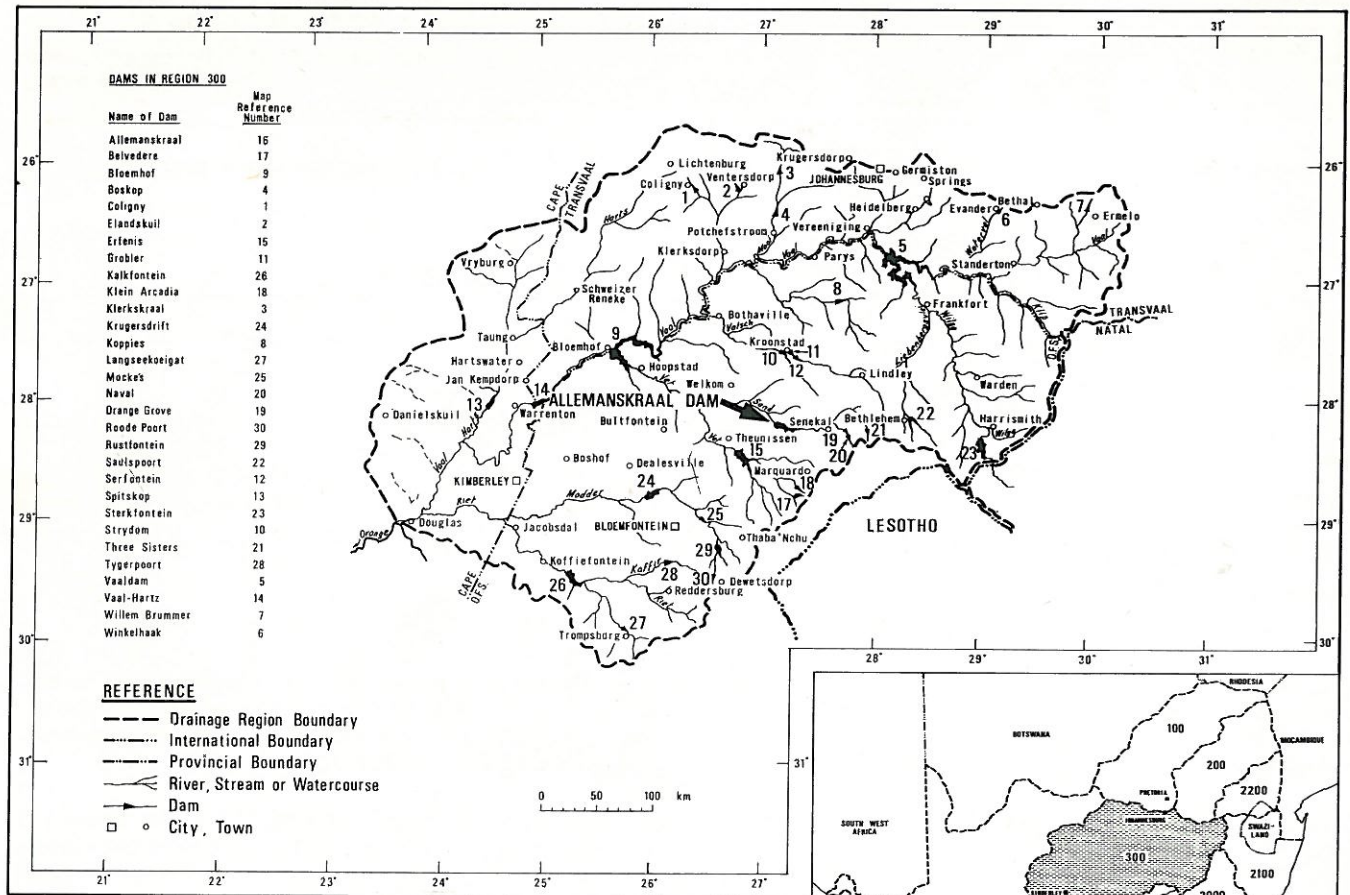
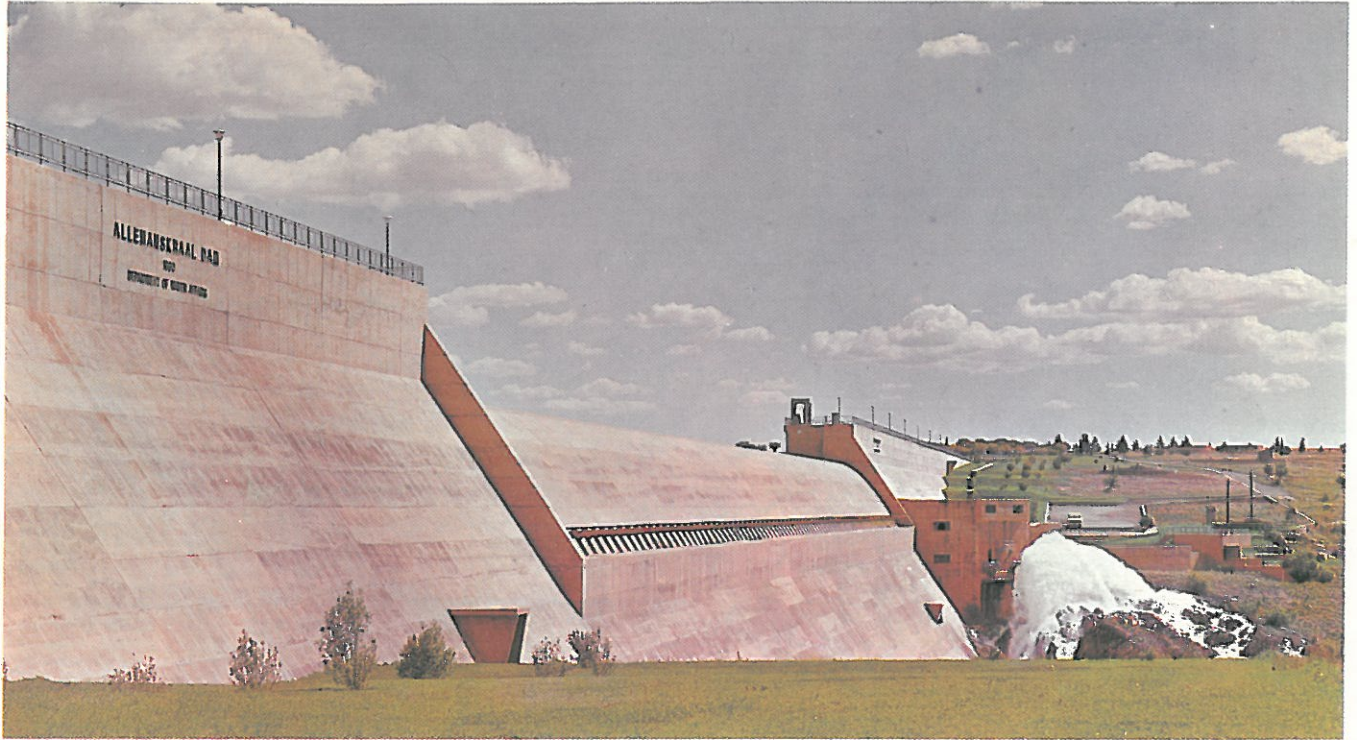


ALLEMANSKRAAL DAM



DRAINAGE REGION 300

ALLEMANSKRAAL

DATA

Year of completion.....	1960
River.....	Sand
Nearest town.....	Senekal
Province.....	Orange Free State
Type.....	Concrete Gravity and Earth
Height above lowest foundation.....	38 m
Length of crest.....	1 338 m
Volume content of dam.....	0,237 Million m ³ { Concrete: 0,09 2 million m ³ Earth: 0,145 million m ³
Gross capacity of reservoir.....	213,035 million m ³
Purpose.....	Irrigation
Maximum discharge capacity of spillway.....	2 265 cumec
Type of spillway.....	Uncontrolled
Owner.....	Department of Water Affairs
Engineering by.....	Department of Water Affairs
Constructed by.....	Department of Water Affairs

DESCRIPTION

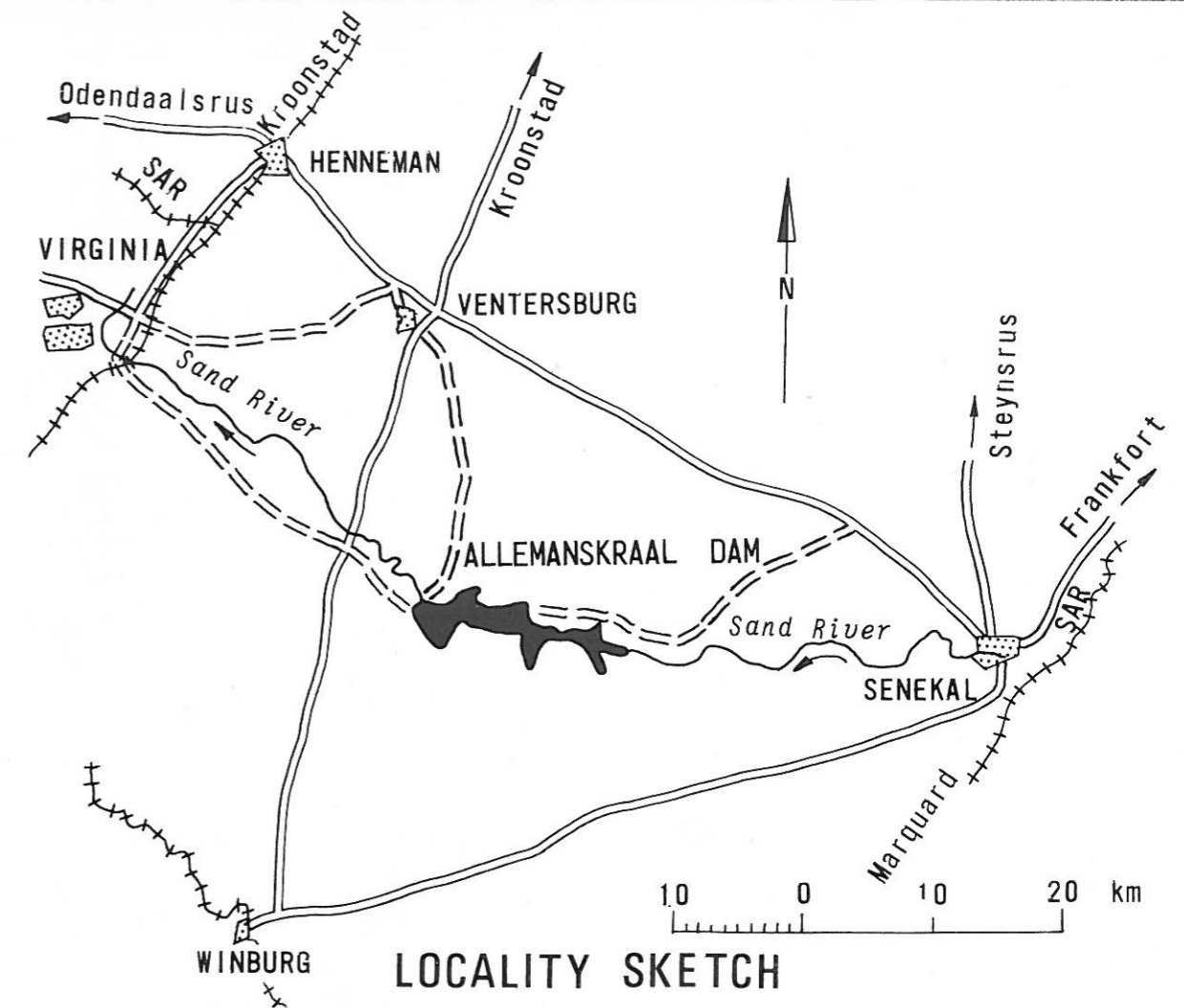
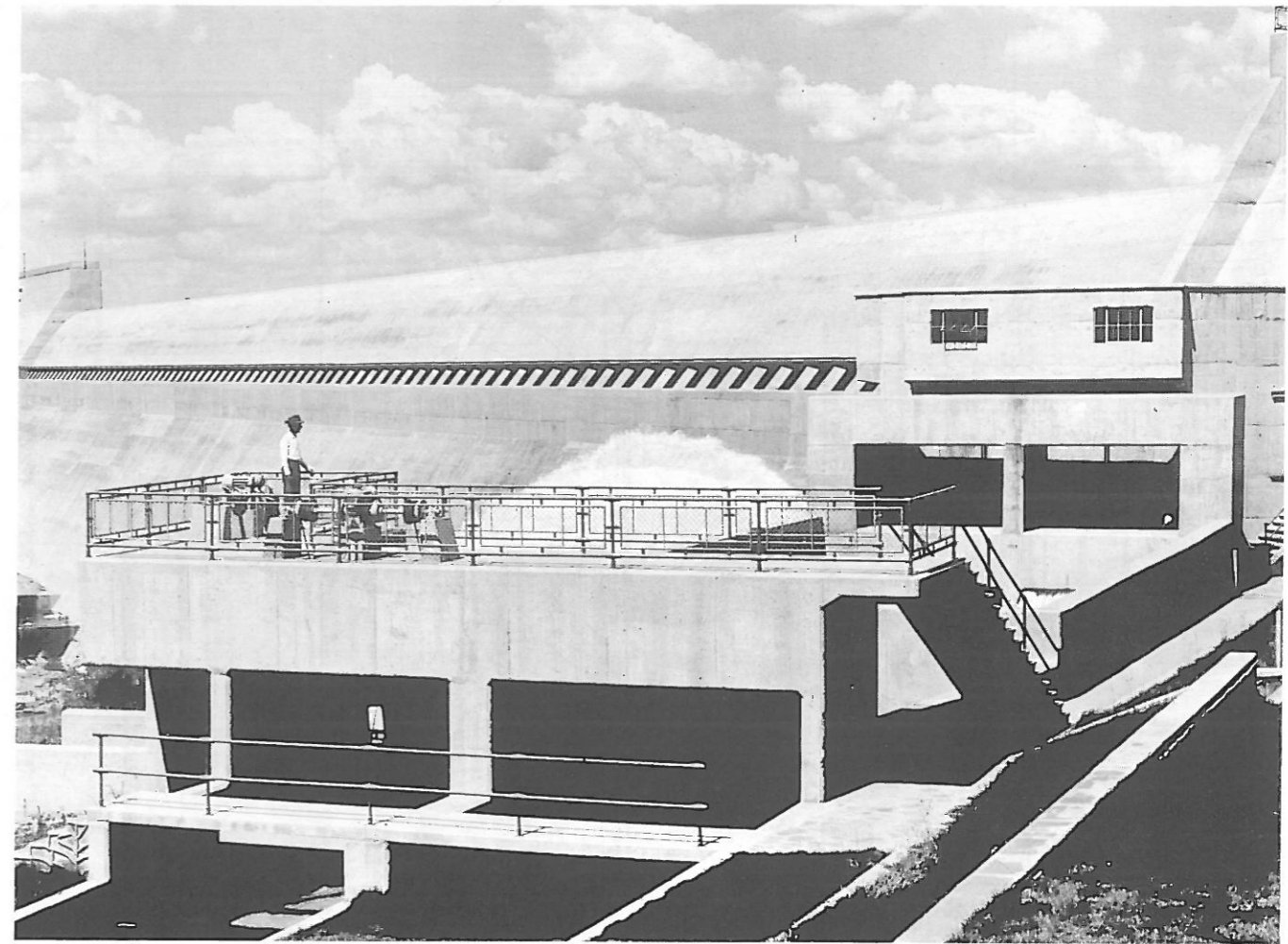
Allemskraal Dam

Allemskraal Dam is one of the two storage units in the Sand-Vet Government Water Scheme. The other unit in the scheme is the Erfenis Dam on the Vet River. Allemskraal is situated on the Sand River south east of Virginia about 50 kilometres upstream of the town. The dam comprises a mass gravity concrete section and an earth embankment on the right flank of the dam. The overspill which is part of the concrete wall is 212 metres long.

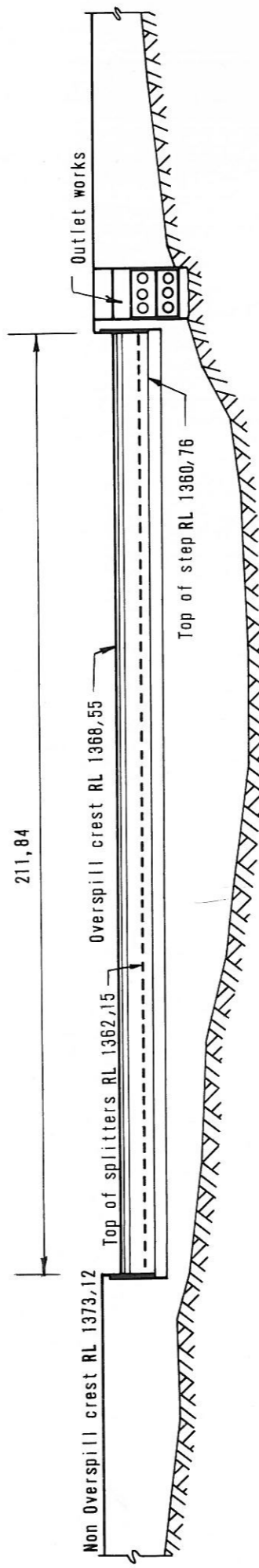
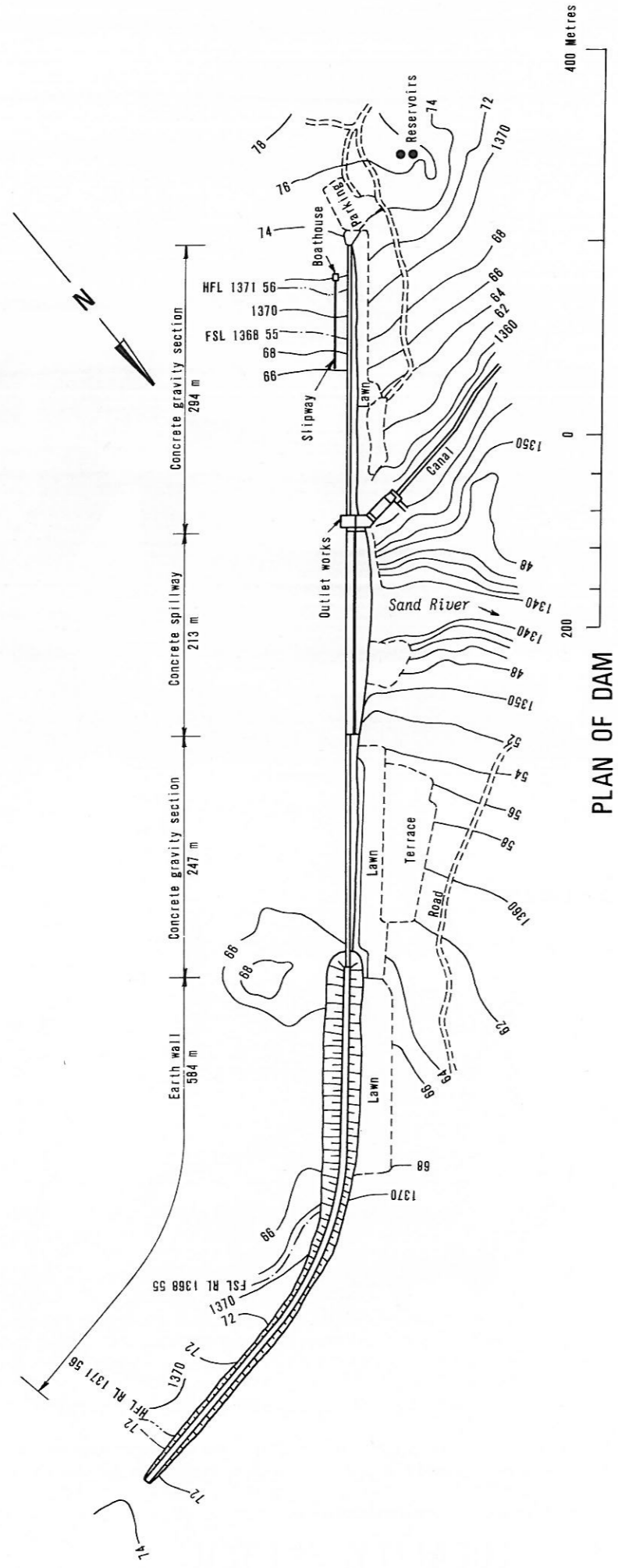
Canals from the dam irrigate areas along both banks of the Sand River to its confluence with the Vet River, about 115 kilometres below the dam, where the Sand River canals meet the Vet River canal system which comes from the Erfenis Dam. The two canal systems are run as an integrated unit and the total scheduled area is 7 640 hectares. Farms traversed by the main canals are each supplied with water to irrigate 17 hectares of ground. Wherever large patches of good irrigable soil occurred, the ground was bought by the State and given out to settlers to be farmed intensively.

The ground bordering on the dam has been made a game reserve known as the Willem Pretorius Game Reserve. This reserve is stocked with a wide selection of game including Rhinoceros and Giraffe but excluding carnivore.

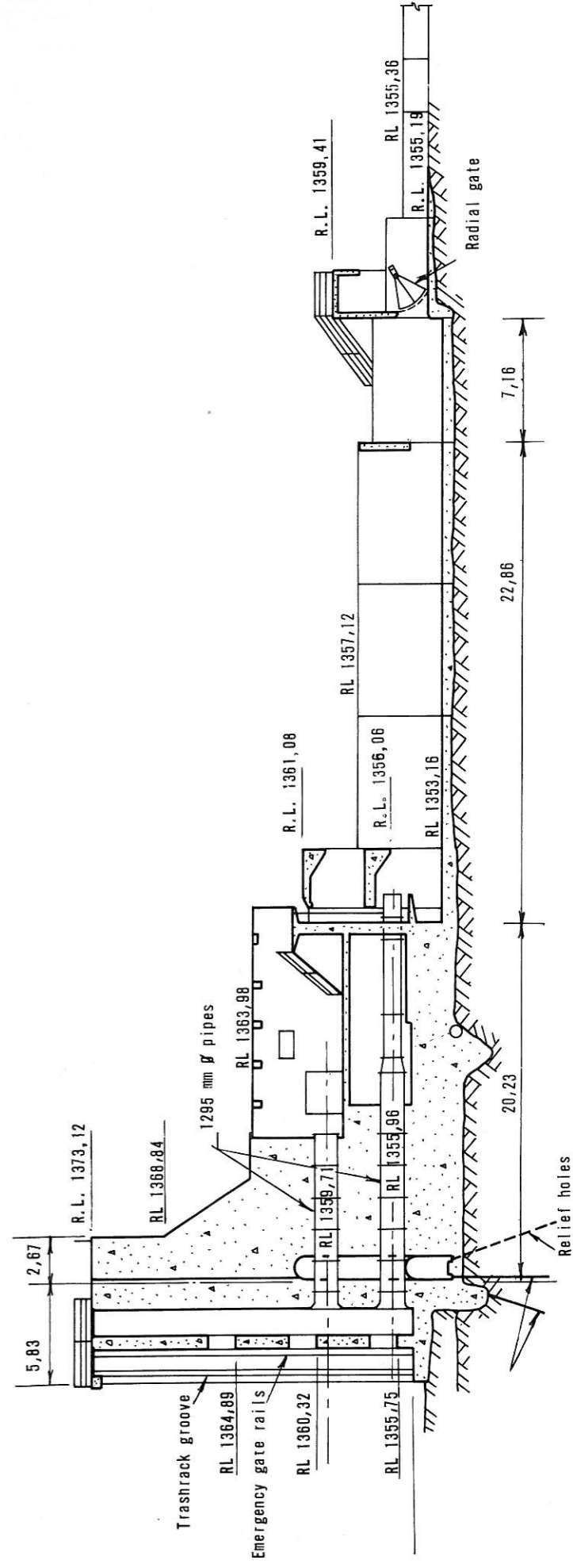
A pleasure resort has been established on the northern shore of the dam near the wall to cater for visitors to this reserve, anglers, yachtsmen and watersports enthusiasts.



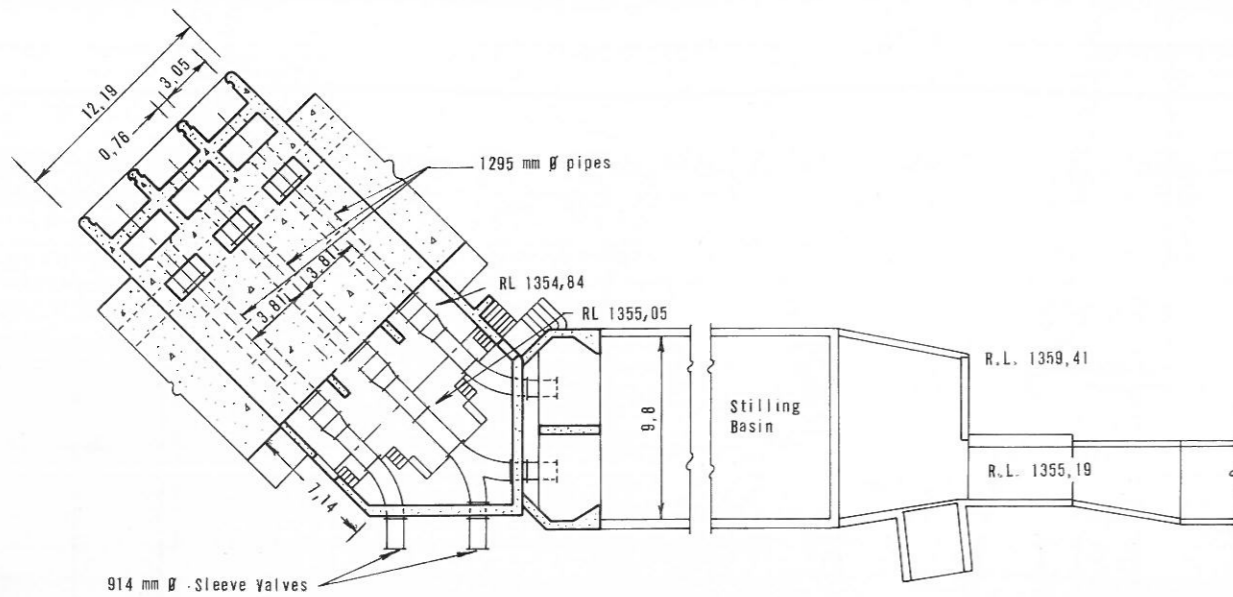
LOCALITY SKETCH



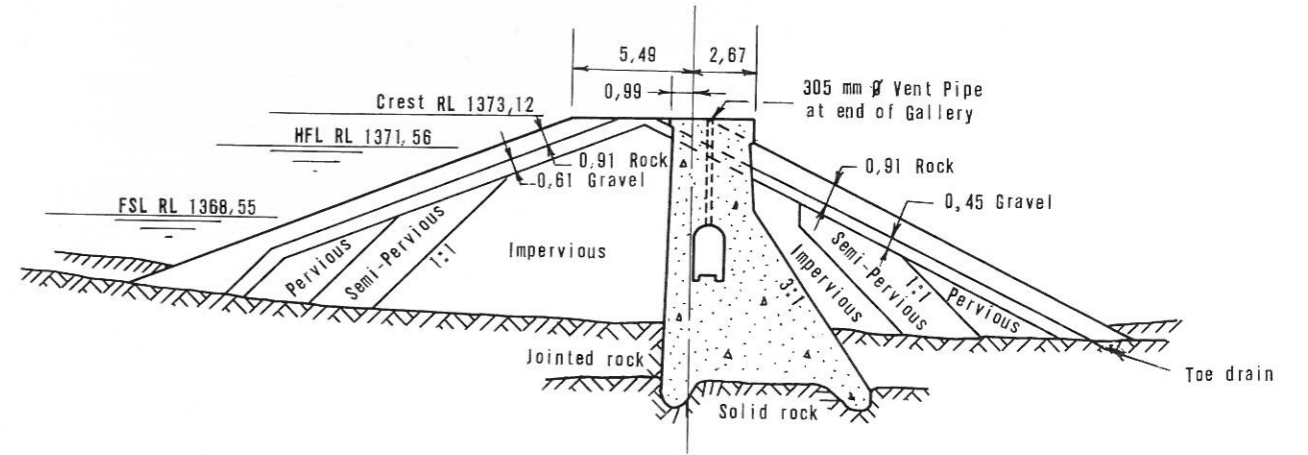
DOWNSTREAM ELEVATION OF CENTRAL PORTION OF DAM



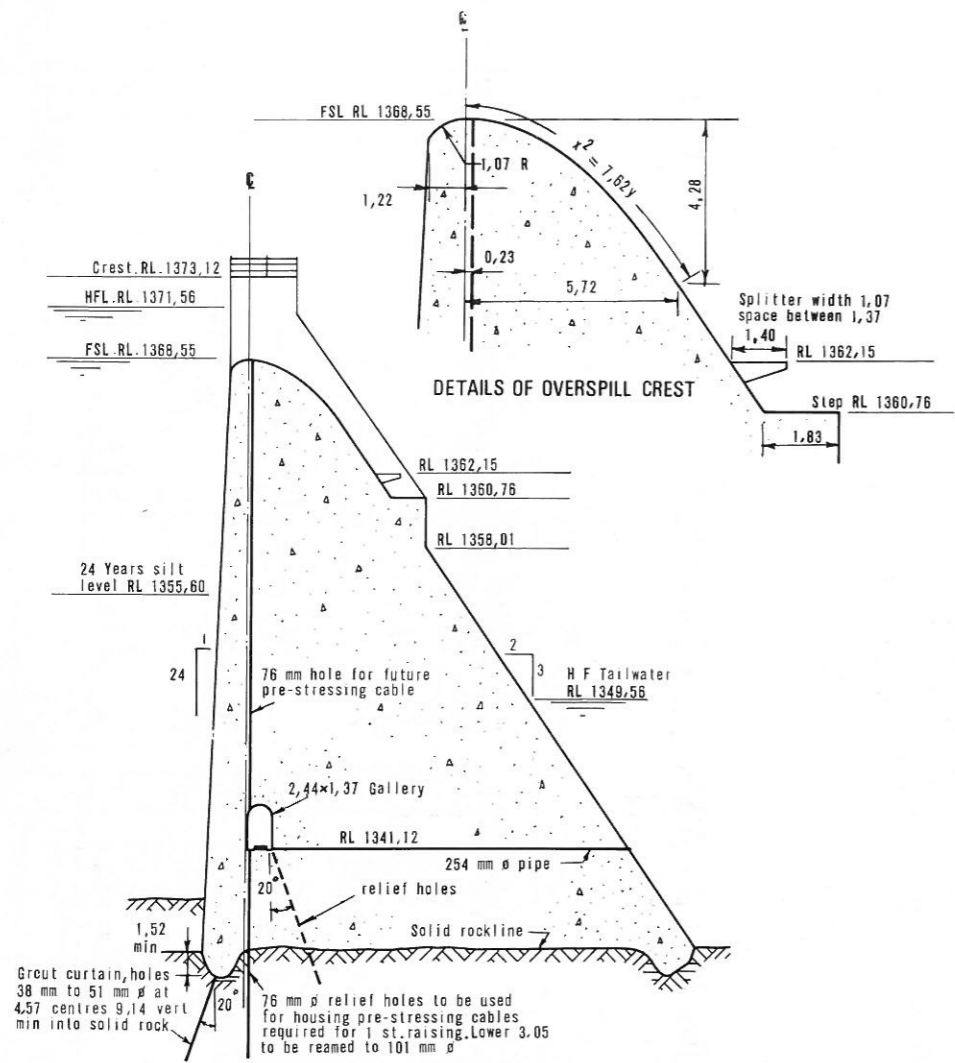
SECTION THROUGH OUTLET WORKS



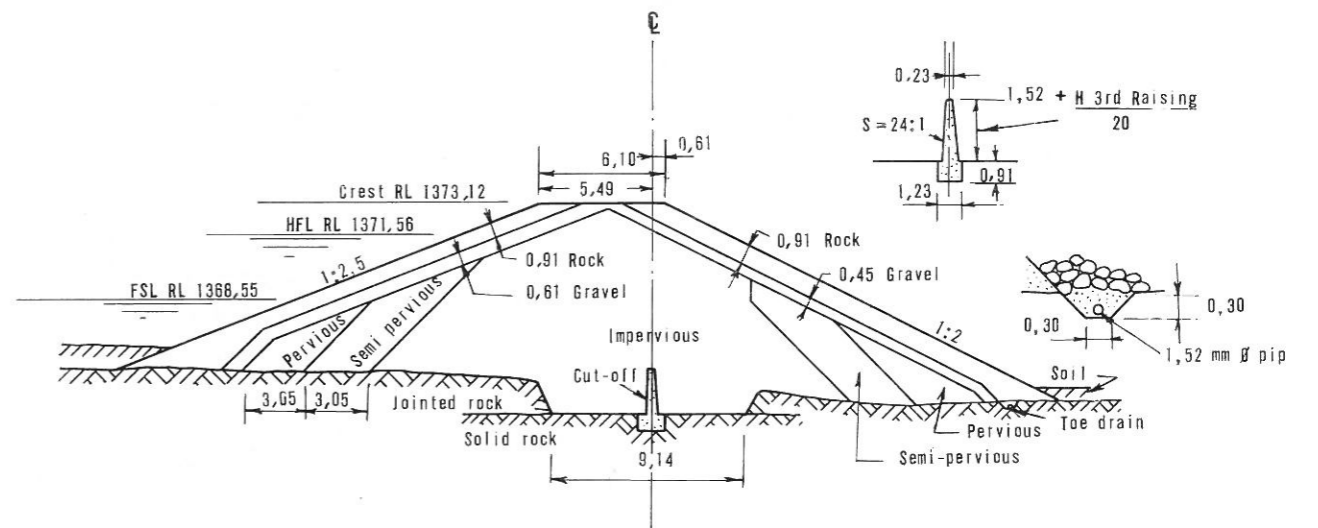
PLAN SECTION OF OUTLET WORKS AT R.L.1357,12



SECTION AT JUNCTION BETWEEN CONCRETE GRAVITY WALL AND EARTH EMBANKMENT



SECTION THROUGH OVERSPILL



SECTION THROUGH EARTH EMBANKMENT