



MOCKES DAM

COORDINATES (degrees, minutes, seconds)

LATITUDE	LONGITUDE
29° 03' 22" E	26° 27' 49" S

LOCATION

Mockes Dam is located in quaternary C52D in the Upper Orange Water Management Area east of Mangaung in South Africa.

DESCRIPTION

Mockes Dam is a composite structure comprising a central concrete section with two earthfill flanks. The dam has a full supply level of 1,303.6 m, with a dead storage level of 1,301.9 m and reservoir bottom at 1,299.5 m.

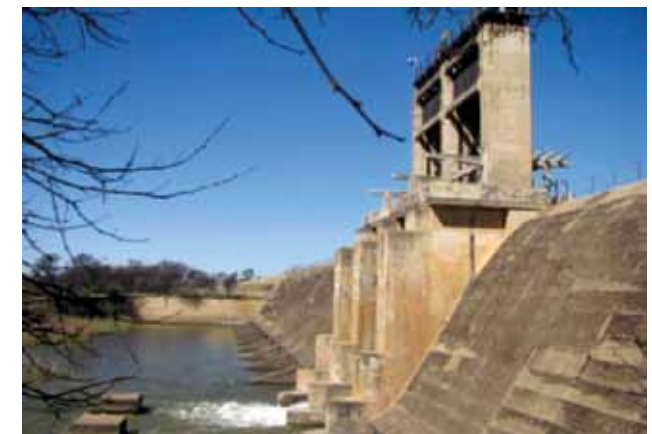
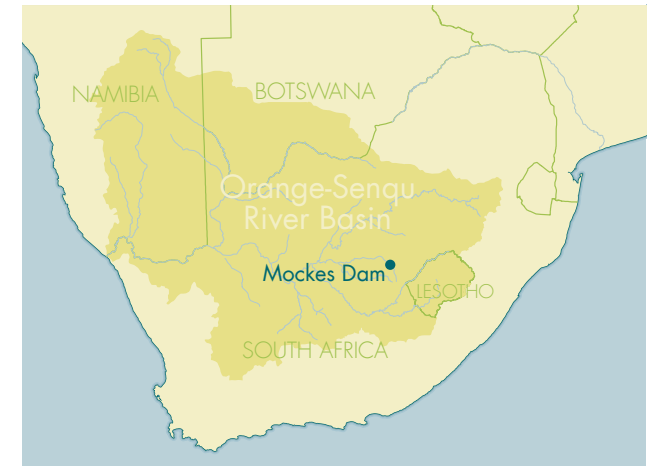
PURPOSE

Mockes Dam is used for domestic water supply. It is part of the Mazelspoort Scheme which supplies Mangaung with (part of) its water supply. Mockes Dam releases water to the Mazelspoort waterworks for this purpose, and is also supported by Rusfontein Dam and transfers from Knellpoort Dam.

PHYSICAL INFORMATION

Dam name	River	Quaternary catchment	FSC* (million m ³)	FSA (km ²)	Owner	DWA code	Wall height (m)	Wall length (m)
Mockes	Modder	C52D	4.63	3.40	Mangaung Municipality	C5R007	18	713

* Live full supply capacity (ORASECOM, 2007a, WRYM datasets and DWA, 1990)



Mockes Dam (source: SA Dept of Water Affairs)



MOCKES DAM

Year of completion	Demands/abstractions (million m ³ /a)			1:50 yield (million m ³ /a)	Maximum spillway capacity (m ³ /s)
	Domestic	Irrigation	Other		
1956	Unknown	Unknown	Unknown	Unknown	991

AREA-CAPACITY RELATIONSHIP

Elevation (m)	Storage (million m ³)	Surface area (km ²)
1,304.0	5.50	4.50
1,303.6	4.63	3.40
1,303.3	3.97	2.90
1,302.5	2.07	1.60
1,302.0	1.42	1.10
1,301.5	0.86	0.60
1,301.0	0.54	0.40
1,300.5	0.27	0.20
1,300.0	0.20	0.10
1,299.5	0.00	0.00

