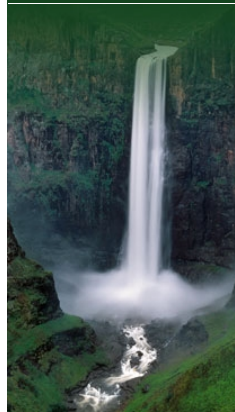


Orange-Senqu River Awareness Kit

[THE RIVER
BASIN](#)[PEOPLE AND
THE RIVER](#)[GOVERNANCE](#)[RESOURCE MANAGEMENT](#)

Resource Management

- Introduction
- Water Demand**
- Water Demand in the Basin
- Water Demand Management
 - WDM at the Basin Level
 - Policies and Strategies
 - Climate Change
- Water Use and Allocation
- Agriculture
 - Botswana
 - Lesotho
 - Namibia
 - South Africa
- Urban and Rural Consumption
 - Upper Orange-Senqu River Basin
 - Vaal River Basin
 - Lower Orange River Basin
- Mining and Industry
- Hydroelectric Power Generation
- Environmental Flows
- Recreation and Tourism
- Conservation and Re-use
 - Water Infrastructure
 - The Value of Water
 - Resource Monitoring
- References



Feedback

[send a general website comment](#)

[report a specific problem with this page](#)

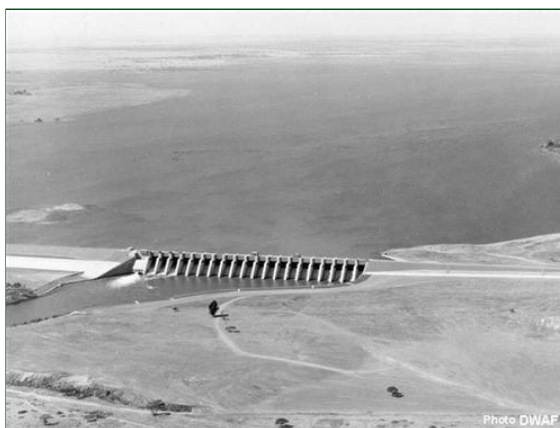
→ Water Demand in the Basin

As the Orange-Senqu River basin approaches closure, water demand in the Orange-Senqu River basin is complicated by the fact that there are four countries sharing the basin, numerous sectors and services that require water and uncertainties as to availability of water - especially with respect to groundwater resources and the potential impacts of climate change.

Chapter Summary

This section looks at the impacts of the following aspects on water demand in the basin:

- [Water Demand in the Basin](#)
- [Water Demand Management](#)
- [Use/Allocation and Registration](#)
- [Agriculture](#)
- [Urban and Rural](#)
- [Mining and Industry](#)
- [Hydro-electric Power Generation](#)
- [Environmental Flows](#)
- [Recreation and Tourism](#)
- [Conservation and Re-Use](#)



Bloemhof Dam.
Source: DWAF South Africa 1998
(click to enlarge)



Agriculture is a vital aspect of water demand in the Orange-Senqu River basin.
Source: Vogel 2009
(click to enlarge)




Recreation and Tourism is a major economic activity in the Lower Orange River region.
Source: Vogel 2009
(click to enlarge)

[Next: Water Demand in the Basin](#) ►

Interactive


Basin Map



Explore the sub-basins of the Orange-Senqu River

[enter](#) ►


Water Management



Explore the water management systems around the basin - including intra-basin transfers and sectoral water requirements

[enter](#) ►


Dams



Investigate the dams and water infrastructure in the Orange-Senqu basin

[enter](#) ►


Video Tour



Tour video scenes along the Orange-Senqu River related to Meeting the Water Challenge

[enter](#) ►

Panel Discussion



Listen to a panel discussion about the history and challenges in the Orange-Senqu basin

[enter](#) ►