

ANNEXURE A : FIGURES

A.1.	GENERAL LOCALITY PLAN OF THE STUDY AREA.....	2
A.2.	LOCATION OF THE INITIAL PROPOSED DEVELOPMENT SITE CATCHMENTS (PHASE 1).....	4
A.3.	LOCATION OF THE FINAL PROPOSED DEVELOPMENT SITE CATCHMENTS (PHASE 2).....	6
A.4.	LOCATION OF RAIN GAUGES.....	8
A.5.	LOCATION OF STREAMFLOW GAUGES.....	10
A.6.	LOCALITY PLAN OF THE NGOAJANE/ HOLOLO CATCHMENT.....	12
A.7.	LOCALITY PLAN OF THE HLOTSE CATCHMENT.....	13
A.8.	LOCALITY PLAN OF THE MAKHALENG CATCHMENT.....	14

A.1.

GENERAL LOCALITY PLAN OF THE STUDY AREA



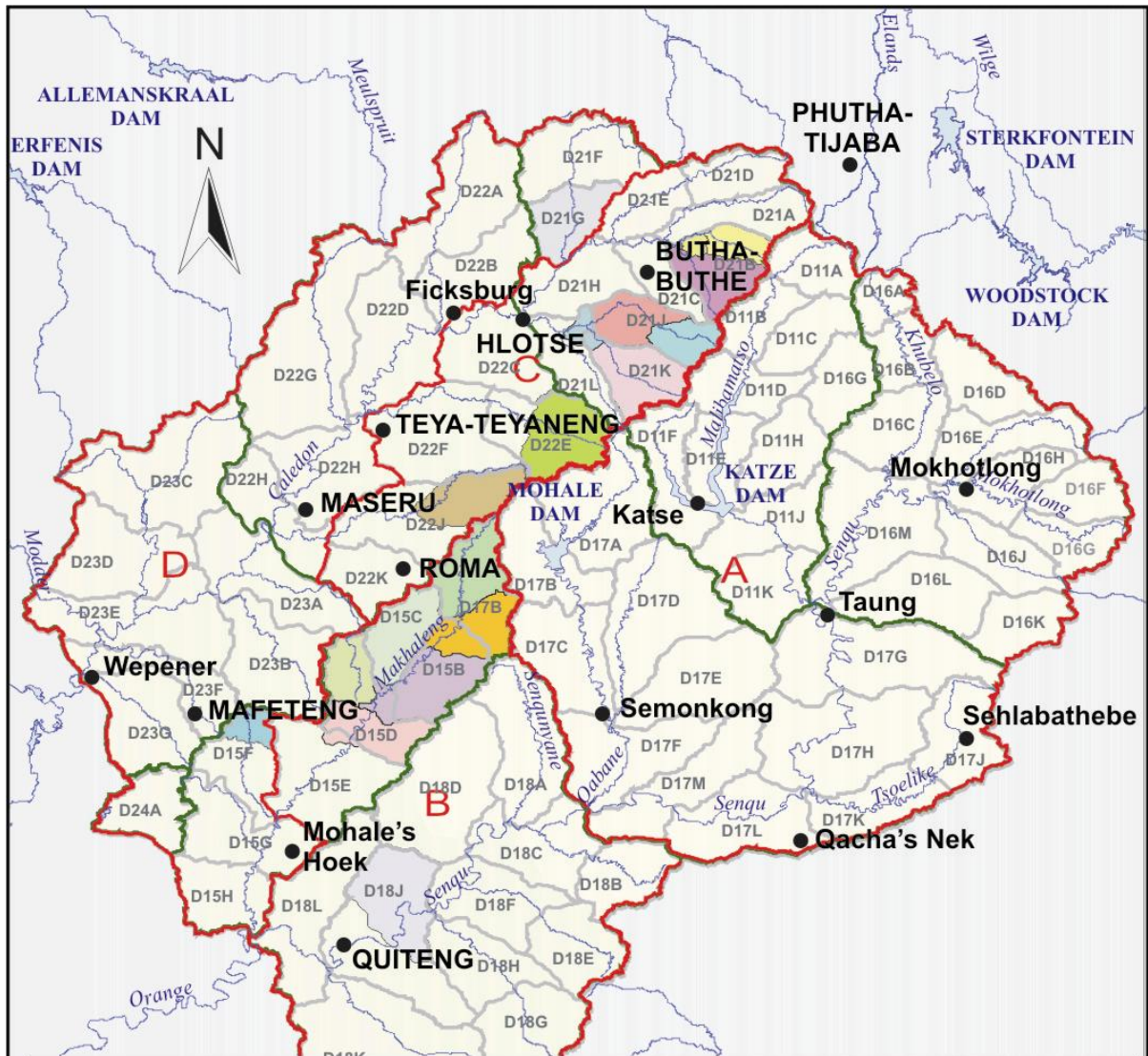
THE LESOTHO LOWLANDS PROJECT

**General Locality Map
of the Study Area**





A.2.

LOCATION OF THE INITIAL PROPOSED DEVELOPMENT SITE CATCHMENTS (PHASE 1)



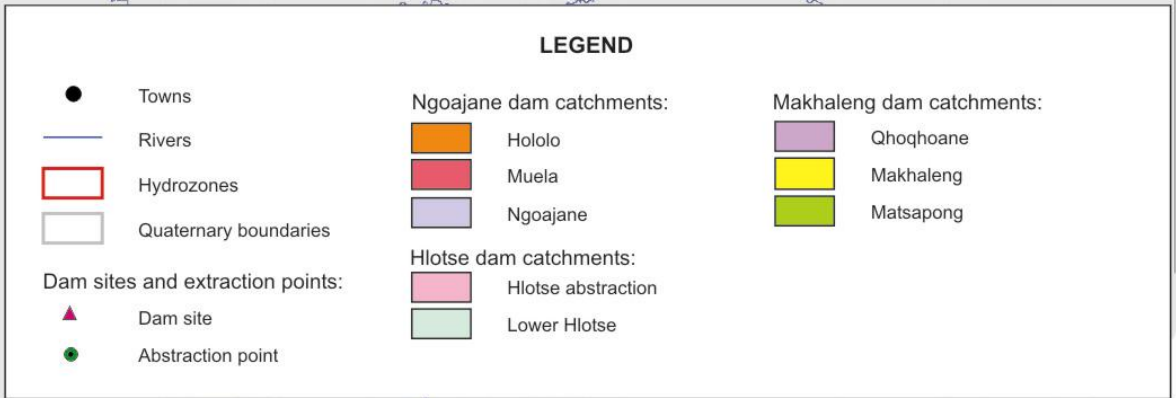
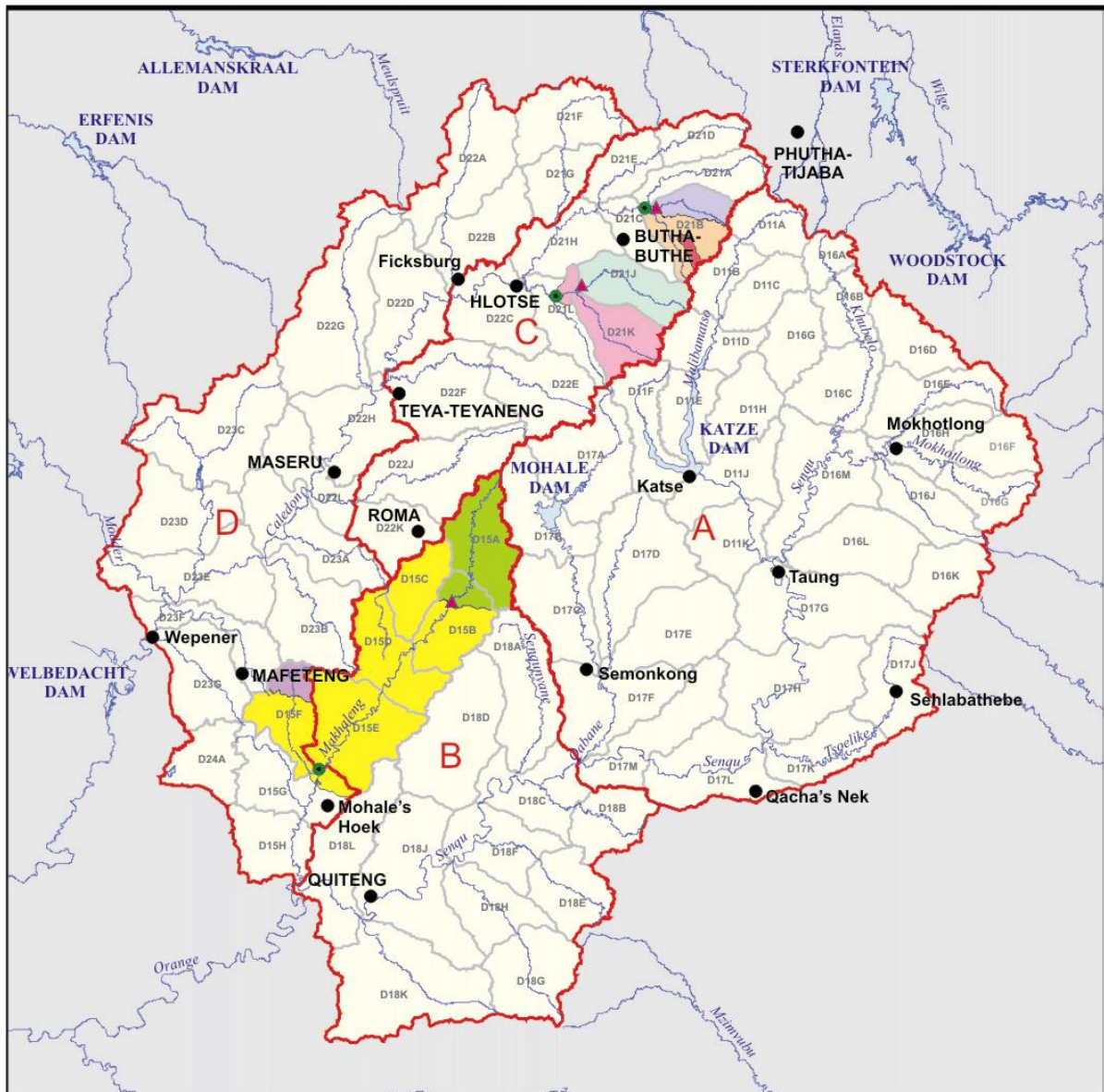
LEGEND



#	Towns				
—	Rivers		Dam catchments:		
▭	Hydrozones	▭	Ha Khoeli	▭	Lower off bank storage
▭	Quaternary boundaries	▭	Hlotse / Mamafubelo abstraction	▭	Mamafubelo
⊥	Dam sites and extraction points	▭	Hlolo / Ngoajane abstraction	▭	Mapoteng
⊥	Dam site	▭	Likhutlong	▭	Matsapong
⊥	Abstraction point	▭	Lower Hlotse	▭	Metolong
		▭	Lower Mak	▭	Middle Ngoajane
		▭	Lower Makhaleng abstraction	▭	Qhoqhoane
		▭	Lower Ngoajane	▭	Senqu abstraction point
		▭	Upper off bank storage	▭	Upper Hlotse
				▭	Upper Ngoajane

	<p>THE LESOTHO LOWLANDS PROJECT</p> <p>General Locality Map of the Study Area</p>	 <p>Consulting Engineers (Pty) Ltd</p>
---	---	---

A.3.

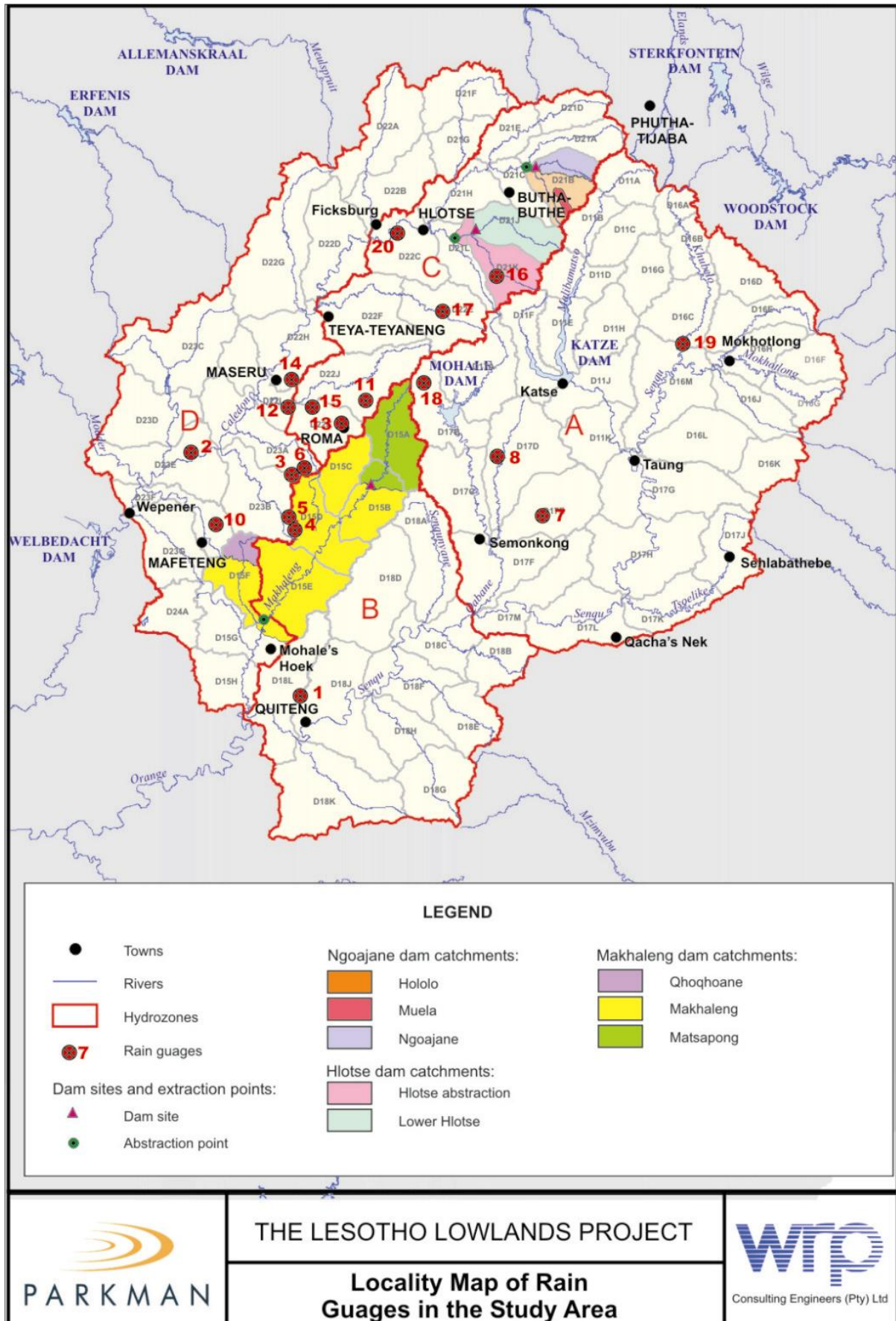
LOCATION OF THE FINAL PROPOSED DEVELOPMENT SITE CATCHMENTS (PHASE 2)



	<p>THE LESOTHO LOWLANDS PROJECT</p>	 <p>Consulting Engineers (Pty) Ltd</p>
	<p>General Locality Map of the Dam Catchments (Phase 2)</p>	

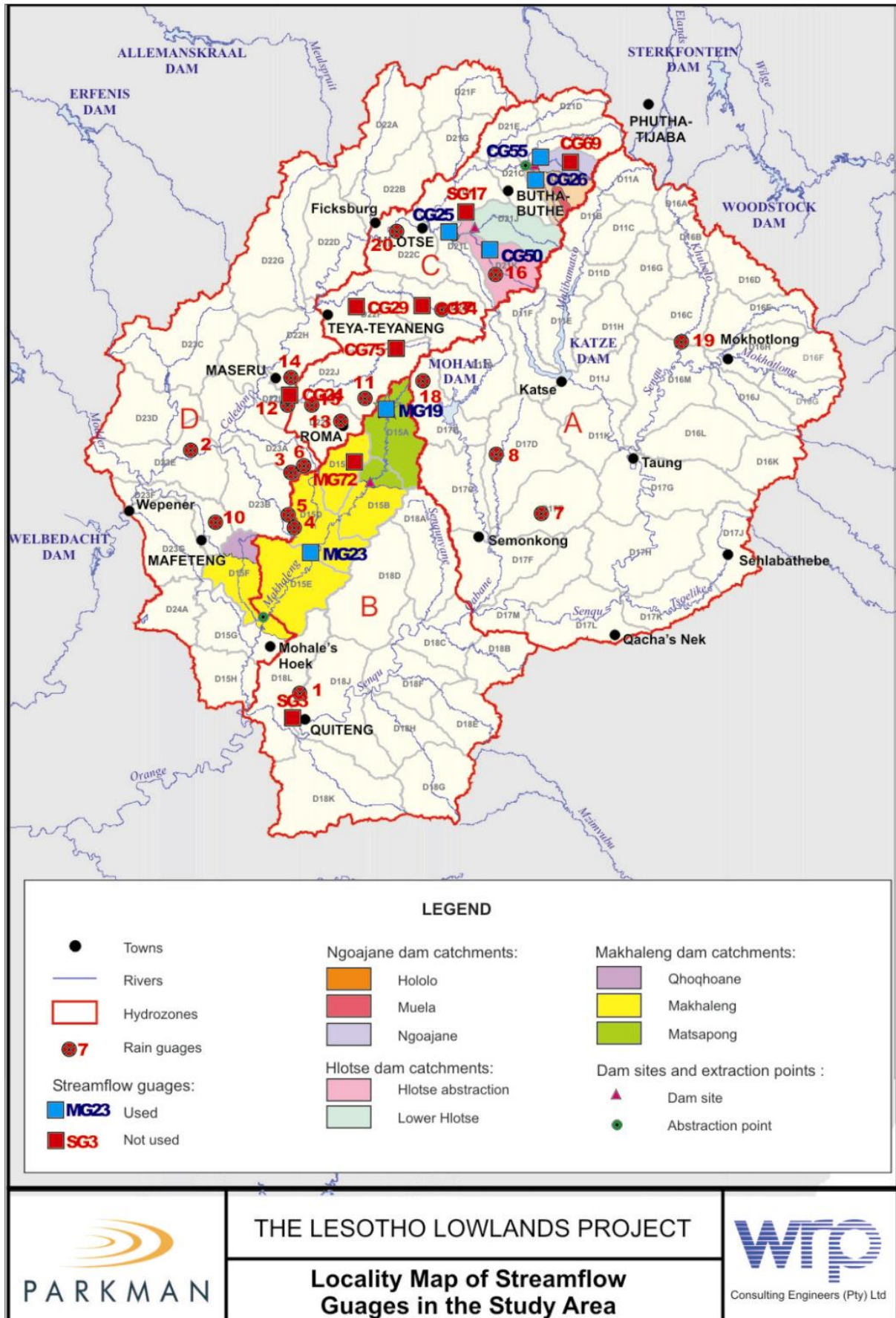
A.4.

LOCATION OF RAIN GAUGES



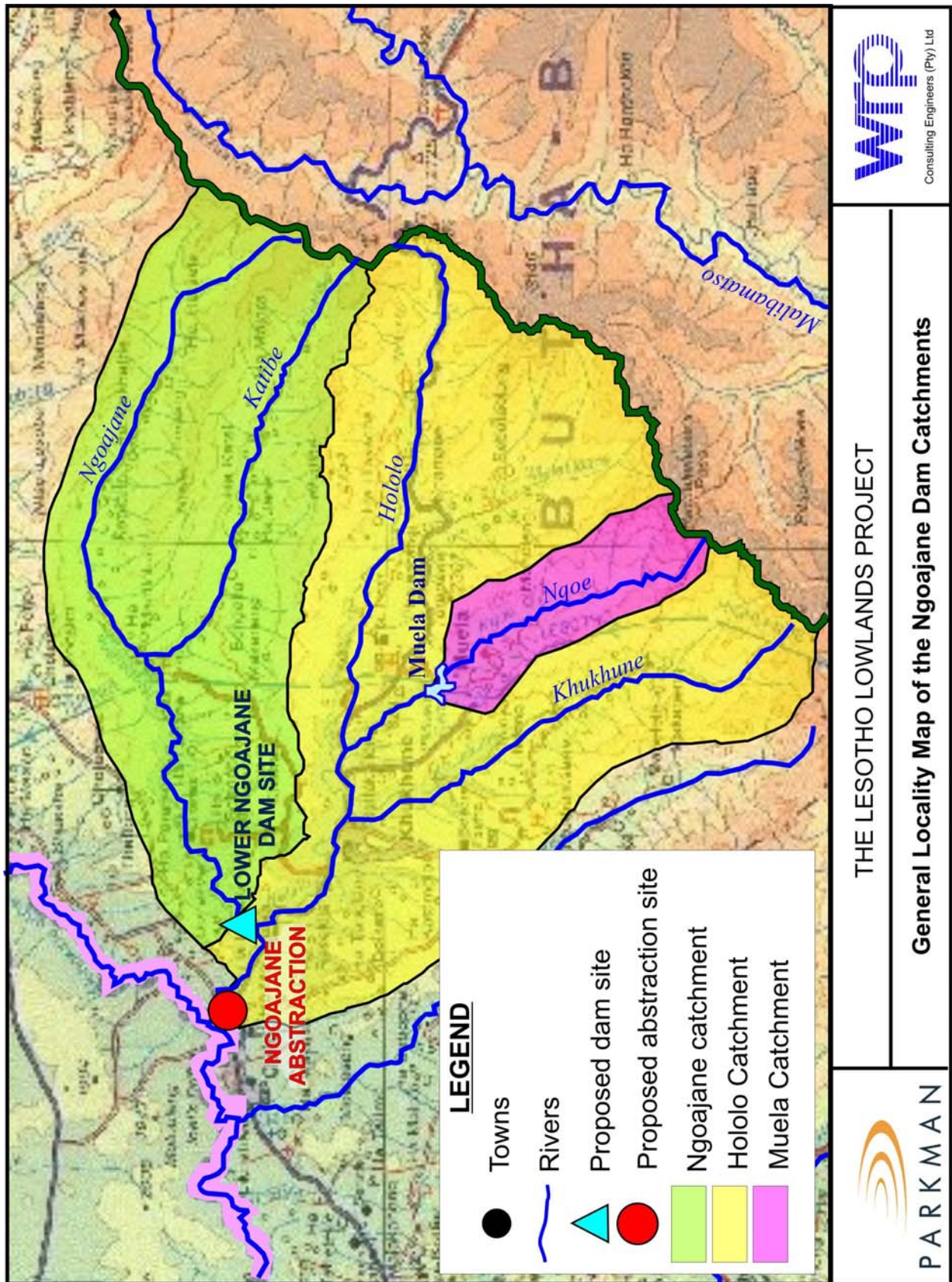
A.5.

LOCATION OF STREAMFLOW GAUGES



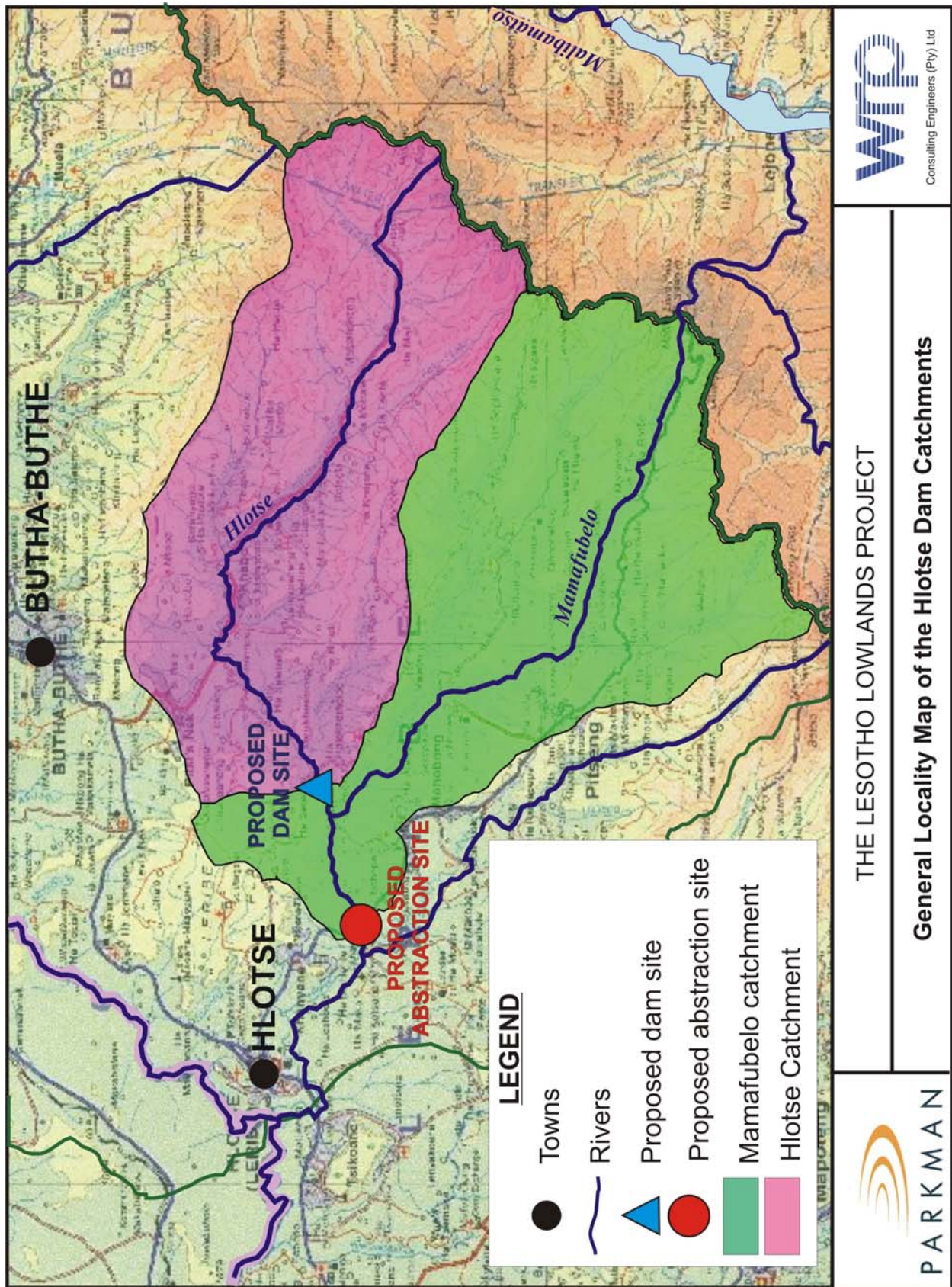
A.6.

LOCALITY PLAN OF THE NGOAJANE/ HOLOLO CATCHMENT



A.7.

LOCALITY PLAN OF THE HLOTSE CATCHMENT



A.8.

LOCALITY PLAN OF THE MAKHALENG CATCHMENT

