

2. Tsosoloso ea Mekhoabo e feletsoeng ke matla nokeng ea Khubelu. Litebello tse sisintsoeng ke tse latelang

- Mefuta ea joang e ka lengoang ho kata mangope e ileng ea hlahlojoa nokeng ea Khubelu.
- Makhotla a puso ea libaka a filoeng boikarabello bakeng sa ho phethahatsa esita le ho baballa mekhoabo e tsosolositsoeng-bocha.
- Meralo ea taolo ea mangope e ileng ea hlahlojoa nokeng ea Khubelu.
- Mekhoabo e tsosolositsoeng e behoe leihlo esita le ho e baballa

Bophethahatsi bo tla etsoa ke Makhotla a puso ea libaka ka kopanelo le Lefapha la Ntlatfatsa ea Mobu, Mokhotlong

3. Thibelo ea kholoheho ea mobu e bakoang ke metsi mebileng. Litebello tse sisintsoeng ke tse latelang:

- Meralo ea tšireletso ea tikoloho e etsoang mebileng nakong eo e qhalang metsi e hlahlobiloeng nokeng ea Khubelu.
- Litataiso le meralo e nepahetseng bakeng sa ho qhalla metsi ka thoko ho mebila.
- Basebetsi ba Lefapha la Litsela ba fuoe boikarabello ba ho etsa meralo e nepahetseng bakeng sa ho qhalla metsi ka thoko ho mebila.

Bophethahatsi ke ba Lefapha la Litsela

4 Liphetho tsa ho behoa leihlo ha mekhoabo nokeng ea Khubelu, phuputso le pokeditso ea tse ithutiloeng tse teng bakeng sa ho sebelisoa linokeng tse ling. Litebello tse sisintsoeng ke tse latelang:

- Tlhakiso le tumellano ea tsamaiso ea mesebetsi ea bohle ba chang ba tšola le mekhoba ea tšebetso mekhoabong, lihlahisoa tsa metsi le lihloliloeng Lesotho.
- Ho thehoa le ho kengoa tšebetso mekhoba oa ho beha leihlo ha MRC (ho kenyeletsoa mekhoabo GIS)
- Ho thehoa ha setsi sa phehlo ea metsi le sa tsa boemo ba leholimo holimo ho noka ea Khubelu hore li sebetse le ho hlokomeloa ka kopanelo le MRC.
- Boteng ba liphetho tsa phuputso holim'a boemo ba metsi mekhoabong e lihlabeng tsa Lesotho bo ka thusa esita le ho fana ka tšusumetso bakeng sa mananeo a tšireletseho mekhoabong kamoso.
- Boteng ba liphetho tsa mananeo a mathata holim'a maphelo, merafo, mehlape le litloaelo tsa taolo ea makhulo bo ka thusa esita le ho fana ka tšusumetso bakeng sa mananeo a mang linokeng tse ling.
- Boithuto bo ka etsoang ho fumana hore na ebe sebaka se holimo ho noka ea Khubelu na ebe se nkoa e le se sireletsehileng.

Bophethahatsi ke ba Lefapha la Metsi ka kopanelo le Sekolo se Sehoho sa Sechaba esita le ba bang ba chang ba tšola Komiting tsa Mekhoabo.

Boithuto ba Litebe-tebe bo entsoe ke ba ofisi ea PEMconsult ka thusano le DHI le TCC(pty) Ltd Lesotho. Boithuto bo ne bo tšehelitsoe ka lichelete ke Setsi sa France sa tsa Tlatsetso Tikolohong. (FFEM)

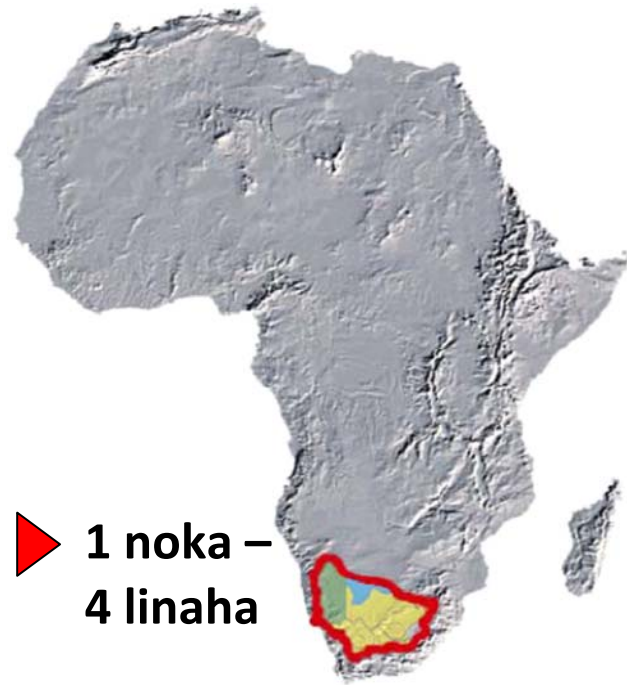


ORASECOM

Komishini ea Noka ea Senqu



Botswana | Lesotho | Namibia | South Africa



1 noka – 4 linaha

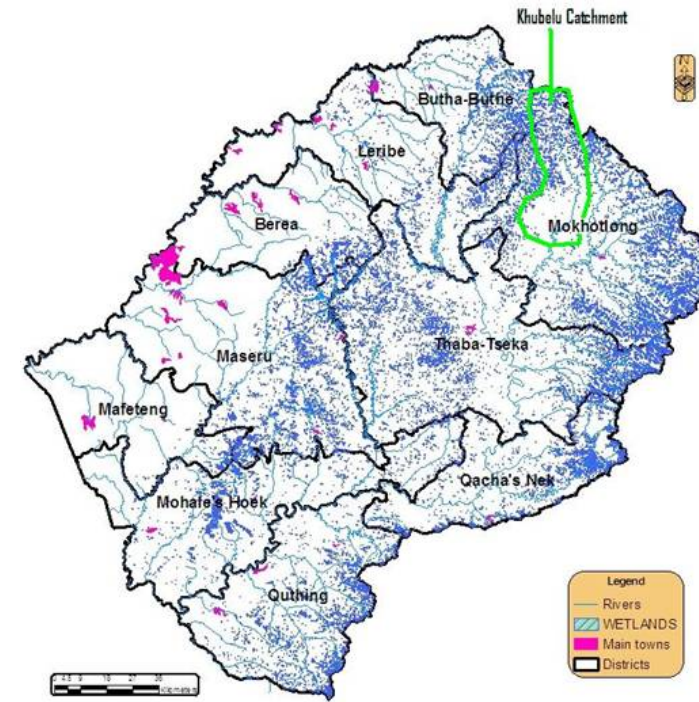
Qalo

Morero oa Noka ea Senqu o tšehetsa boieane ba tlhohleho le merero e meng ea ntlafatso ea linaheng tse 'ne ho tloha ka temo ea boemo ba tlase le ea thekiso ea lihlahisoa ho ea kena mererong e phahameng ea khoebo le mesebetsing e meholo.



Mehloli ea metsi a Senqu e hlaha matsarankeng a lithaba a lihlaba tsa Lesotho moo ho namalla ha naha, metsi a pula le liphoro-hloana li etsang boieane ba mekhoabo. Mekhoabo ea lihlaba tsa Lesotho ke lits'obotsi tsa tlhohleho tse sa fumaneheng ka bongata tikolohong e ka Boroa ho Aforeka kaha e ikhetholla ka limela le sebopeho ho mefuta e meng ea mekhoabo tikolohong ena. Mekhoabo eo ho buang ka eona e ka lihlabeng, ke e bitsoang ka hore ke litebe-tebe. Ke mekhoabo eo boholo e fumanehang moo ho phahameng, moo likhohlo li thomehang, le mehloling e phahameng ea linoka.

'Mapa oa Lesotho o bonts'ang Mekhoabo le Noka ea Khubelu



Mekhoabo e etsa ts'ebetso ea bohlokoa taolong ea metsi ka ho boloka le ho lokolla metsi a pula hanyane ka hanyane, a itlahisa ka liliba tse runyang le linokana. Mekhoabo e boitse e laola tlhokiso ea metsi ka ho hlokola litšila, ho boloka matsoai, ho tliša phetoho, ho hlahisa esita le ho fetisetsa matsoai a tlhohleho moo a lokelang.

Ha ho le joalo litebe-tebe kahohle-hohle ke mehlopi ea bophelo esita le ho Kenya chelete kahare ho naha. Hajoale metsi a bokelletsoe ke Morero oa Metsi a lihlaba ho tlatsetsa mehloli o moholo o kenyang chelete Lesotho ho tsoa kantle.

Lehoja mekhoabo e le bohlokoa ho batho le moruong, mekhoabo e ntse e felloa ke matla, ka ho khetholoha sena se bakoa ke phuliso e sa laoleheng ea liphoofo. Le ho hatikelakoa kamehla, ho runya ha mehaho, ho motela le khoholeho ea mobu, temo le tšebeliso e mpe ea lihlahisoa tsa mekhoabo.

Komishini ea Noka ea Senqu le boithuto ba litebe-tebe

In Ka selemo sa 2000 linaha tsa Botswana, Lesotho, Namibia le South Africa li ile tsa theha Komishini ea Noka ea Senqu (ORASECOM) ho akofisa ea karolelano ea

lihlahisoa tsa metsi e le ho ka matlafatsa boikopanyo, ntlafatso ea bongoe ba tikoloho le ho tšehetsa ntlafatso ea moruo tabeng tsa bophelo ho khothaletsang taolo ea moshoelella ea Noka ea Senqu le lihlahisoa tsa eona.



Mokhoabo oa ha Seema (Hlakola 2008)

E le mokhoa oa ho ts'ehetso lenaneong la ORASECOM Mokhatlo oa Fora oa Lichelete oa Tikoloho Lefats'eng (FGFE) ho ile ha khethoa litsebi ka 2008 ho etsa boithuto ba mekhoabo ka sepheo sa ho sireletsa boteng le boemo bo botle ba metsi nako e telele ho tloha mehloling ea Senqu ka lihlabeng ka ho etsa moralo oa tšireletso e akaretsang le likhato tsa poloheho molemong oa hore litebe-tebe li sale li ntse li le teng.

Sebaka sa noka ea Khubelu karolong e ka Leboea-Bophirimela ea setereke sa Mokhotlong se ile sa hloauoa e le sebaka sa teko bakeng sa boithuto ba litebe-tebe. Nokana ea Khubelu ke mehloli oa mantlha oa noka ea Senqu; e fumaneha haufi-ufi mehloling ea linokana tsa mokhahlelo oa bobeli oa letamo la LHWP

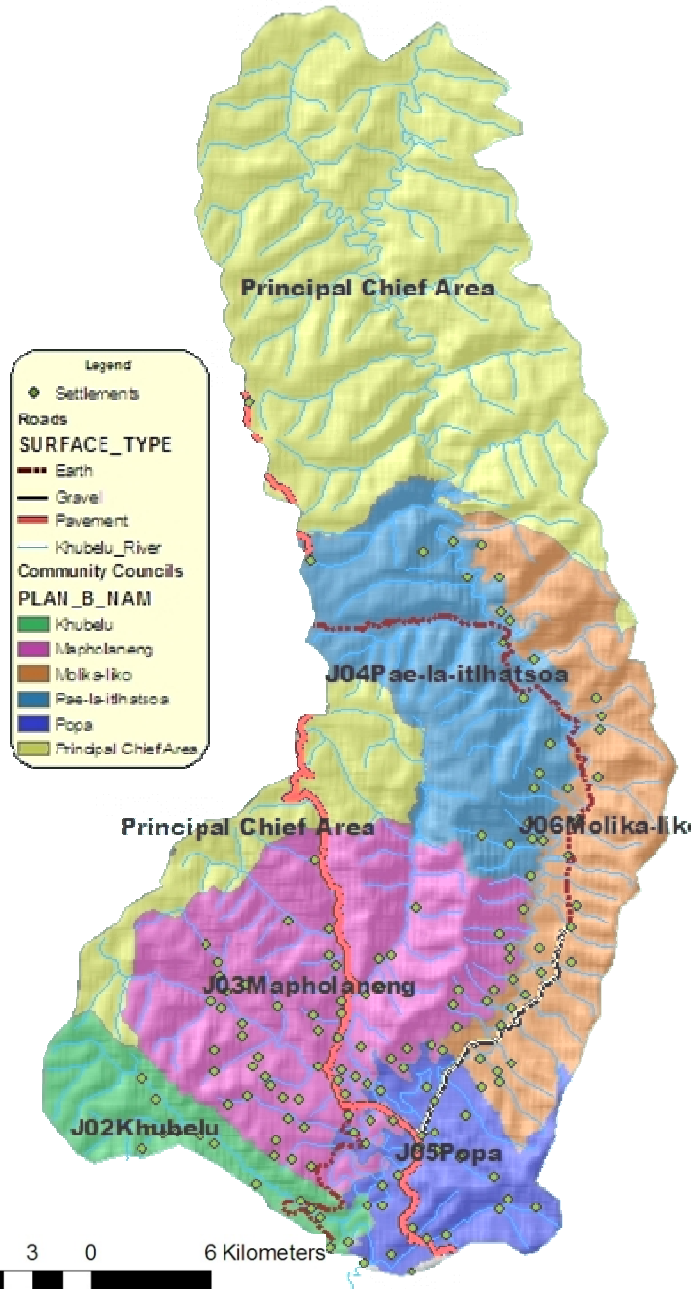
Mekhoabo ea Khubelu

Mekhoabo e hlahelletseng ka mahetla bohareng le e holimo ho noka ea Khubelu e ile ea ithutoa ka botebo. Limela tse fumanehang mekhoabong li tsoakane, ke tse telele le tse khutšoane.



Noka ea Khubelu e laoloa ke Makhotla a mahlano a puso ea libaka, 'me karolo ea 40% ea sebaka se ka thoko ho taolo ea puso ea libaka se tsamaisoa ke Morena oa Sehlooho oa Malingoaneng. Palo ea sechaba se mabopong a noka e hakanyetsoa ho 20,000.

'Mapa oa Khubelu o bonts'ang makhotla a ntlafatso le libaka tse tlas'a Morena oa Sehlooho.



Mesebetsi ea mantlha ea mekhoabo ea Khubelu

- Phuliso
- Metsi bakeng sa liphoofofo
- Metsi a sebelisoang malapeng
- Joang
- Bochaba le kholo moeeng
- Merafo
- Phehlo ea motlakase

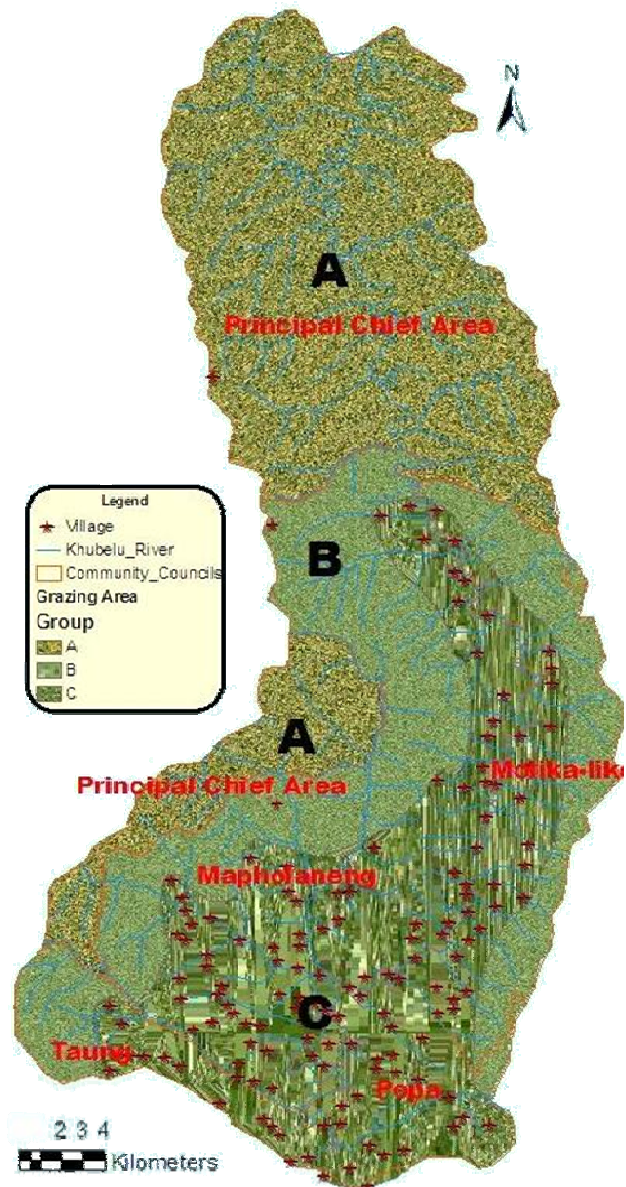
Mekhoabo ke karolo ea libaka tsa phuliso nokeng ea Khubelu, 'me kaha sechaba boholo se itšetlehile ka leruo la liphoofofo, mesebetsi ea mekhoabo e bohlokoa haholo bakeng sa bophelo ba nako e telele ba batho, ka ho khetholoha likarolo tse futsanehileng tsa sechaba tse iphelisang ka temo ea boemo bo tlas'e.

Sebakeng sena ho fula liphoofofo tse ruiloeng ke baahi ba mabopong a esita le ba hlahang ka mathoko ba abeloang tumello ea ho fulisa metebong. Likhomo tse ka bang 10,000, linku tse ka bang 50,000, lipoli tse ka bang 25,000, lipelesa tse ka bang 1000 le lipere tse ka bang 500 e sa le li ntse li phela mona ka lebaka la phuliso e etsoang ho ipapisitsoe le linako tsa selemo.

Tlotlontsoe ea libaka tsa phuliso

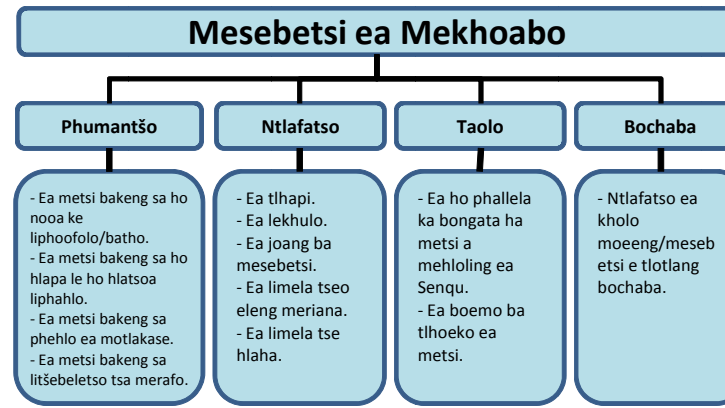
- Libaka tsa phuliso ea Lehlabula moo metebo e bang meholing, libakeng tse ka thoko ho meeli ea Makhotla a Puso ea Libaka. Taolo ea phuliso e boliseng ba Marena a Lihlooho.
- Libaka tsa phuliso le tsa metebo li bohareng ba noka, 'me li kahare ho meeli ea Makhotla a Puso ea Libaka moo phuliso e lebeletsoeng hore e be lipakeng tsa Motšeanong le Loetse, e laoloa ke Makhotla a Puso ea Libaka (Hajoale Morena oa Sehlooho le eena o fana ka mangolo a tumello karolong ena ea B).
- Libaka tsa phuliso tse fumanehang haufi le metse, tse lebeletsoeng ho fulisoa lipakeng tsa Phuptjane le Pulungoana tse laoloang ke Makhotla a Puso ea Libaka.

'Mapa oa Khubelu o bonts'ang sebaka sa phuliso.



Melemo ea mekhoabo e tsamaisoang ka bokhabane

Melemo ea mekhoabo kapa tšebetso ea mekhoabo nokeng ea Khubelu e ka hlopshoa ka likarolo tse 'ne joalokaha ho bonts'itsoe sets'oants'ong se latelang:



Mesebetsi ena ea mekhoabo e bohlokoa bakeng sa sechaba se phelang mabopong a noka ea Khubelu esita le se phelang hohle mabopong a noka ea Senqu.

Litjeo tsa tšenyehelo mabopong li hakanyelitsoe ho ipapisitsoe le mathata a tlisitsoeng ke pokello ea metsi (nyollo ea limilione tse mashome a mahlano tsa maloti bakeng khaho ea mokhahlelo oa bobeli oa letamo la Metsi a Lihlaba) le phokotseho ea tlhahiso ea boea ba linku le ba lipoli ho entseng tahlehelo ea Maloti a 200,000 ka selemo ho beng ba liphoofofo.

Mesebetsi e meng ea mekhoabo e ntse e le bohlokoa empa ho thata ho e hlopholla hore na e ka hakanyetsoa litjeong tse kae ho ipapisitsoe le mathathamo a teng hajoale.

Mathata a hlalisoang ke phuliso e tlotlontsoeng moeli le ho runya ha mehaho

Mekhoabo e lihlabeng tsa Lesotho e bothateng ba phuliso e tlotlontsoeng moeli, haholo libakeng tsa B le C, le likarolo tse ling tse fulisehang tsa A.



Phapano pakeng tsa makhulo a sirelitsoeng le a fulisitsoeng ho tloha moeli. (Sebaka sa phuliso sa B se pel'a Letšeng la terae)

Mekhoabo e seng e feletsoe ke matla e fana ka monyetla ho litali ho fata mekoti e ntšetsang pele khoholeho ea mobu.



Ho runya ha mehaho haholo mebila, ho na le khatello e matla mekhoabong le khoholeho libakeng tseo metsi a ntseng a tloaetse ho tsamaea ho tsona.



Khoholeho e tlišoang ke metsi a tsoang 'mileng

Mehato e lokelang ho nkoa ho sireletsa, ho tsosolosa bocha le ho boloka mekhoabo

Boithuto ba Litebe-tebe bo entse litšisinyo tsa lenaneo la tšireletso, tsosoloso-bocha le polokeho ea mekhoabo leo sepheo sa mantlha sa lona eleng:

'Moralo o akaretsang oa tšireletso le polokeho ea 'Litebe-tebe' nokeng ea Khubelu o tla fana ka mokhoa oa katamelo bakeng sa tsamaiso ea moshoelella ea mekhoabo e tla tsoela molemo sechaba esita le tikoloho le ho e sireletsa nako e telele boteng ba metsi le boemo bo ntlafetseng ba 'ona ho tloha meholing ea Senqu.'

Lipheo tse ikhethang le litebello tse shebaneng le lintlha-khohle tsa lenaneo ho siningoa ke hore tse latelang::

- Boemo bo ntlafetseng ba bophelo ba sechaba se phelang nokeng ea Khubelu ho ipapisitsoe le tsamaiso ea moshoelella ea makhulo. Litebello tse sisintsoeng ke tse latelang:
 - Komiti ea Tsamaiso ea Lihlahisoa e tla thehoa bakeng sa noka ea Khubelu.
 - Moralo oa phuliso oa noka ea Khubelu ho ipapisitsoe le thehoa ha libaka tsa taolo ea makhulo (A-B-C) ho latela meeli ea CC le boikarabello ba marena le Makhotla a puso ea Libaka.
 - MRC le balisana ba filoeng boikarabello, beng ba mehlape, mekhatlo ea phuliso, makhotla a puso ea libaka le marena ba laole makhulo a Khubelu ka mokhoa o tla tšoarella nako e telele.
 - Botsamaisi ba Setereke bo filoeng boikarabello ho ka tšehetsa moralo oa moshoelella oa tšebeliso ea mobu le taolo e nepahetseng ea mehlape esita le makhulo.
- Bophethahatsi ke makhotla a mahlano a puso ea libaka ka kopanelo le Morena oa Sehlooho, beng ba mehlape le mekhatlo ea phuliso esita le Lefapha la Taolo ea Makhulo.